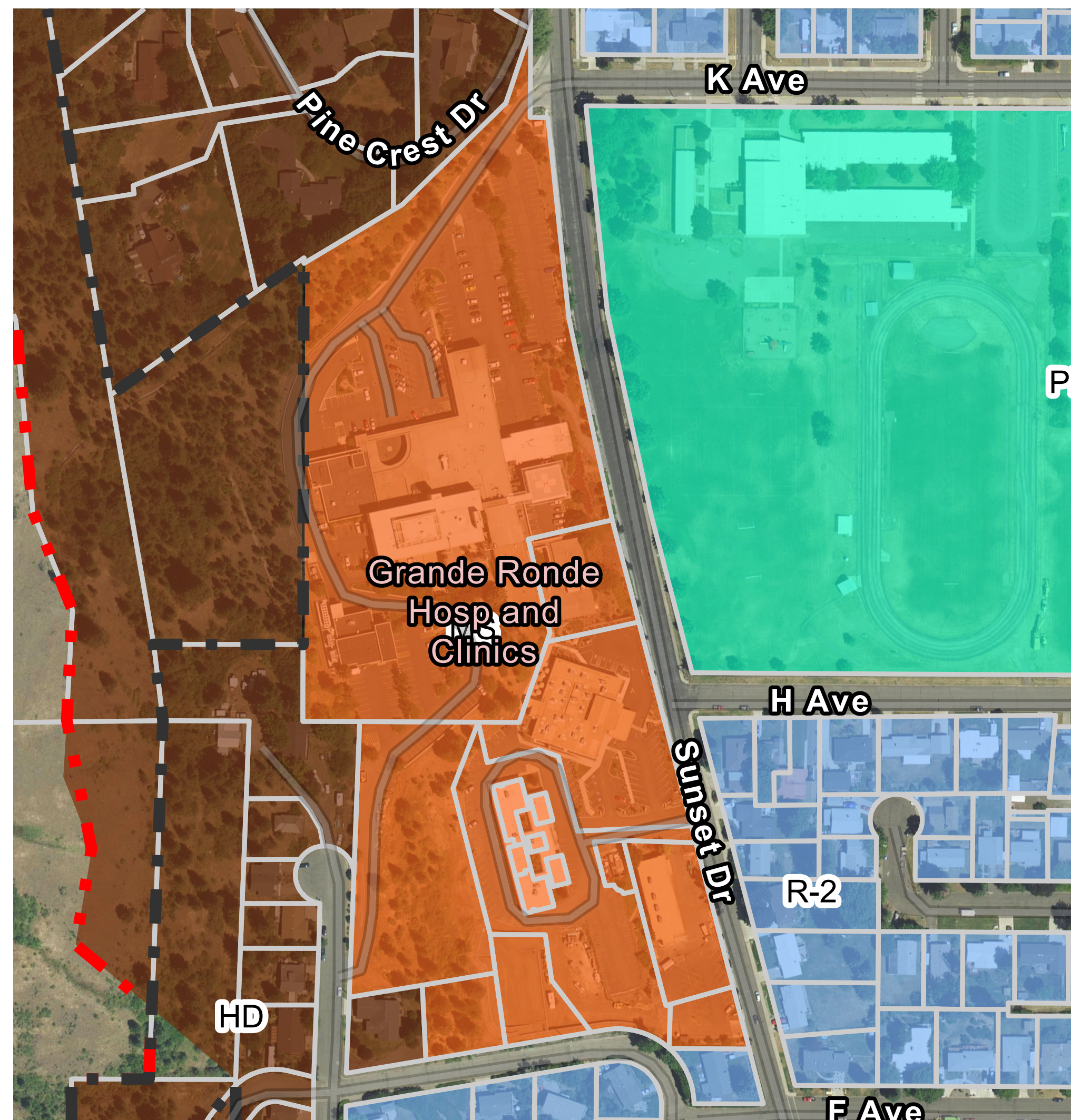


Grande Ronde Surgery Expansion

Surgery Expansion Project : Site Plan Submittal to City of La Grande Oregon

900 Sunset Drive, La Grande, OR 97850

Zoning Map



Aerial Overview



Drawing List : Architectural

- G0.1.01 Title Sheet
- A.001 Campus Plan
- C-120 Site Utilities Plan
- C-200 Sunset Drive Improvements
- C-300 Foundation/Footings Plan
- A.LL3 GRH Expansion Lower Level 3 Plan
- A.LL2 GRH Expansion Lower Level 2 Plan
- A.LL1 GRH Expansion Lower Level 1 Plan
- A.L1 GRH Expansion Surgery Level 1 Plan
- A.L2 GRH Expansion Level 2 Plan
- A.L3 GRH Expansion Roof Plan and Helipad
- A.301 Building Sections
- A.501 East Elevation (@ Sunset Drive)
- A.502 North Elevation
- A.503 South Elevation

Drawing List : Parking Analysis

- P.001 Campus Parking Plan
- P.002 Campus Parking Summary Calculation
- P.100 Hospital Basement Parking Calculation
- P.101 Hospital First Floor Parking Calculation
- P.102 Hospital Second Floor Parking Calculation
- P.103 Hospital Third Floor Parking Calculation
- P.610.01 Building 610 Parking Calculation
- P.RMP.01 RMP Clinic First Floor Parking Calculation
- P.RMP.02 RMP Clinic Second Floor Parking Calculation
- P.Condo.01 Medical Condos Parking Calculation
- P.LL3 GRH Expansion Lower Level 3 Parking Calculation
- P.LL2 GRH Expansion Lower Level 2 Parking Calculation
- P.LL1 GRH Expansion Lower Level 1 Parking Calculation
- P.L1 GRH Expansion Surgery Level 1 Parking Calculation
- P.L2 GRH Expansion Level 2 Parking Calculation

Project Summary

New Surgery Center , Future Program Space, Loading Dock, Materials Storage, and existing Helipad relocation to the new roof. Located on the existing Grande Ronde Hospital Campus

Building Data

Building Area :
98,000 sf

Building Occupancy :
I-2 Healthcare (Per OSSC 2019)

Building Height (above average adjacent grade plane) :
Allowable: 60 ft
Proposed: 57 feet

Number of Stories 5

Construction Type :
Type I -B Non Combustible, Fire Rated, Fully Sprinklered

Zoning Data

Existing Zone
MS - Medical Services

Proposed ZoningType
MS - Medical Services

Contacts

Owner

Grande Ronde Hospital

Contact: Joel Donovan Phone: (541) 963-1535

Architect

Petersen Kolberg and Associates, P.C.

Contact: Thane Eddington Phone: (503) 968-6800

Civil Engineer

J-U-B Engineers

Contact: Darral Moore Phone: (509) 783-2144

Structural Engineer

Froelich Engineers

Contact: Michael Peterson Phone: (541) 383-1828

Mechanical Engineer

Interface Engineering

Contact: Jesse Agosta Phone: (503) 382-2634

Electrical Engineer

Interface Engineering

Contact: Jim Sattlem Phone: (503) 382-2746



Project Title:

**Grande
Ronde
Surgery
Expansion**

PKA Project Number: 200913

Surgery Expansion

900 Sunset Drive, La Grande, OR
97850

Key Plan

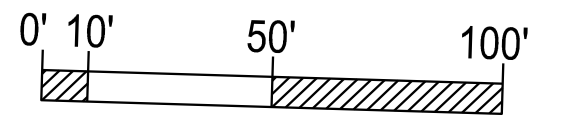
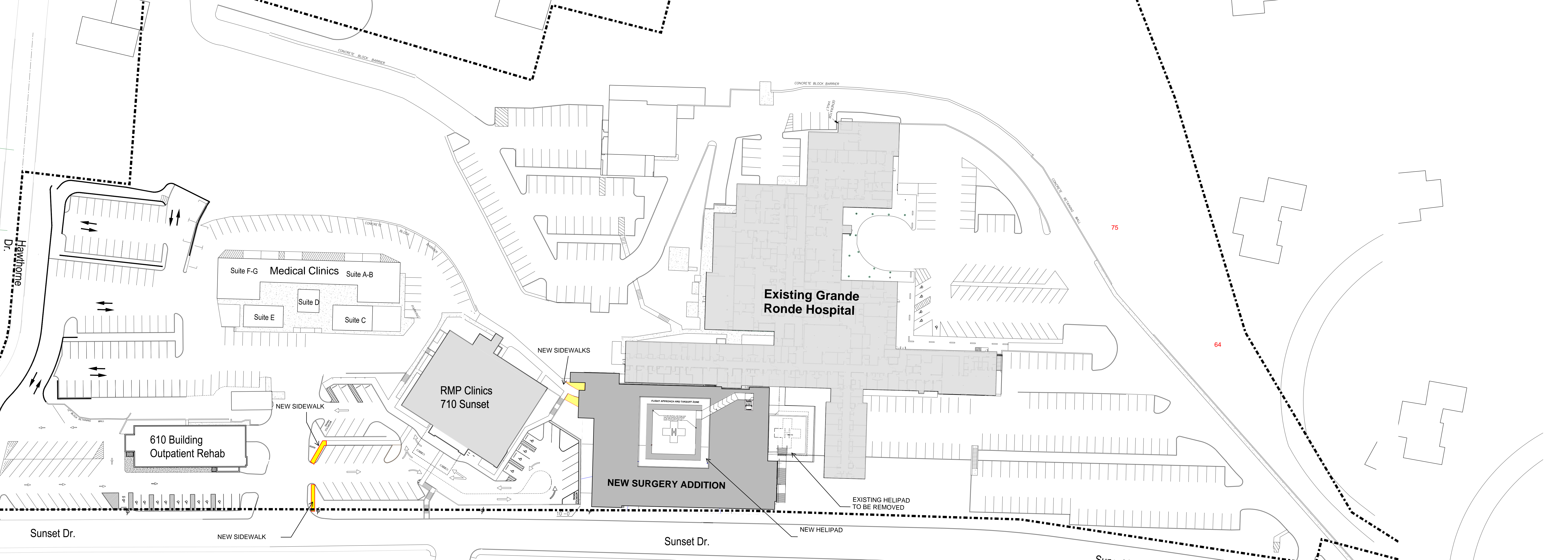
21 February 2022 - Site Plan Submittal

Sheet Title

Cover Sheet

Sheet Number:

G0.1.01



GRANDE RONDE HOSPITAL CAMPUS PLAN

(not to scale)

LAGRANDE OREGON

Campus Site Plan

SP - 1

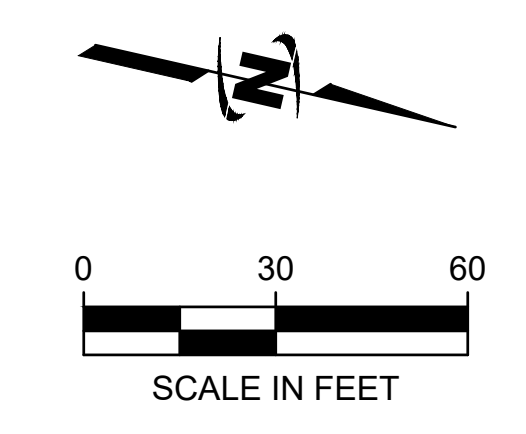
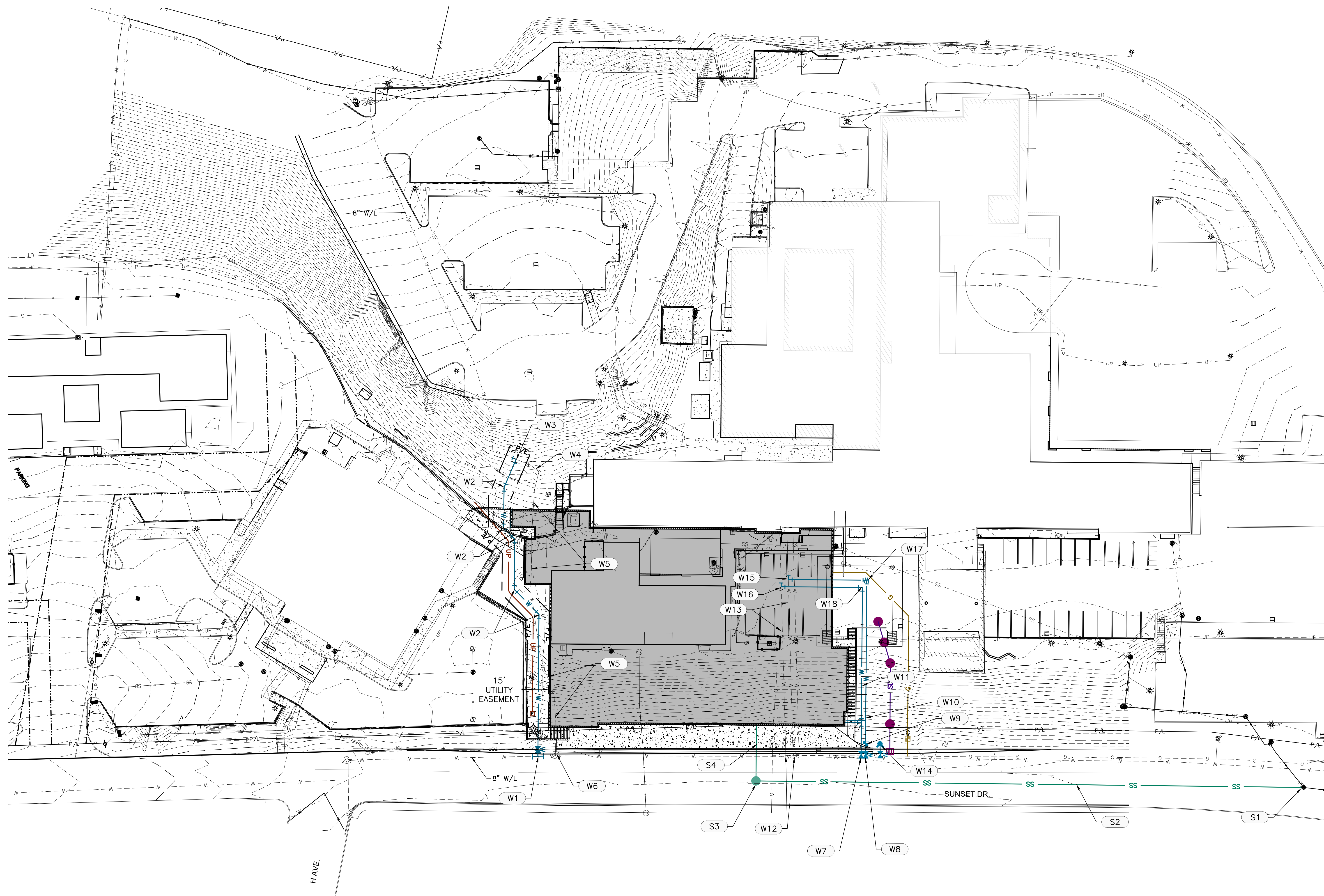


Campus Site Plan

Grande Ronde Surgery Expansion
01/28/22

Project Number: 200913

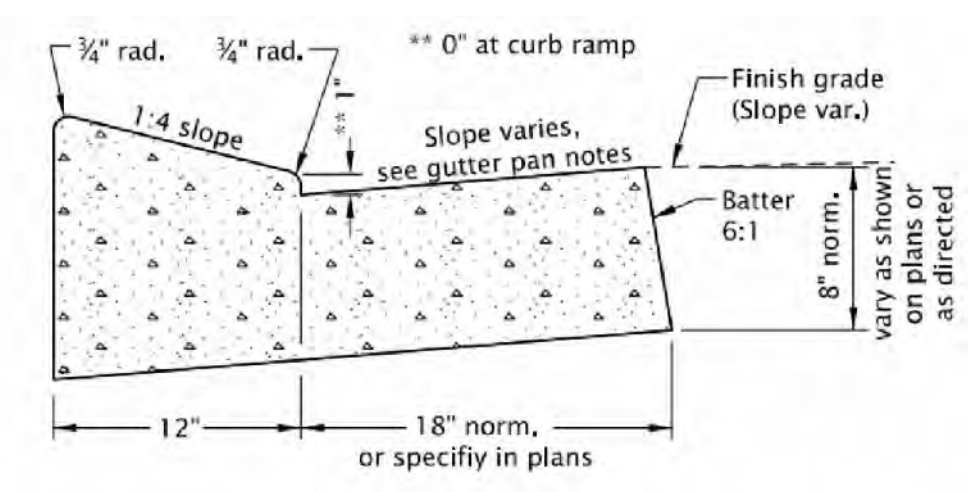
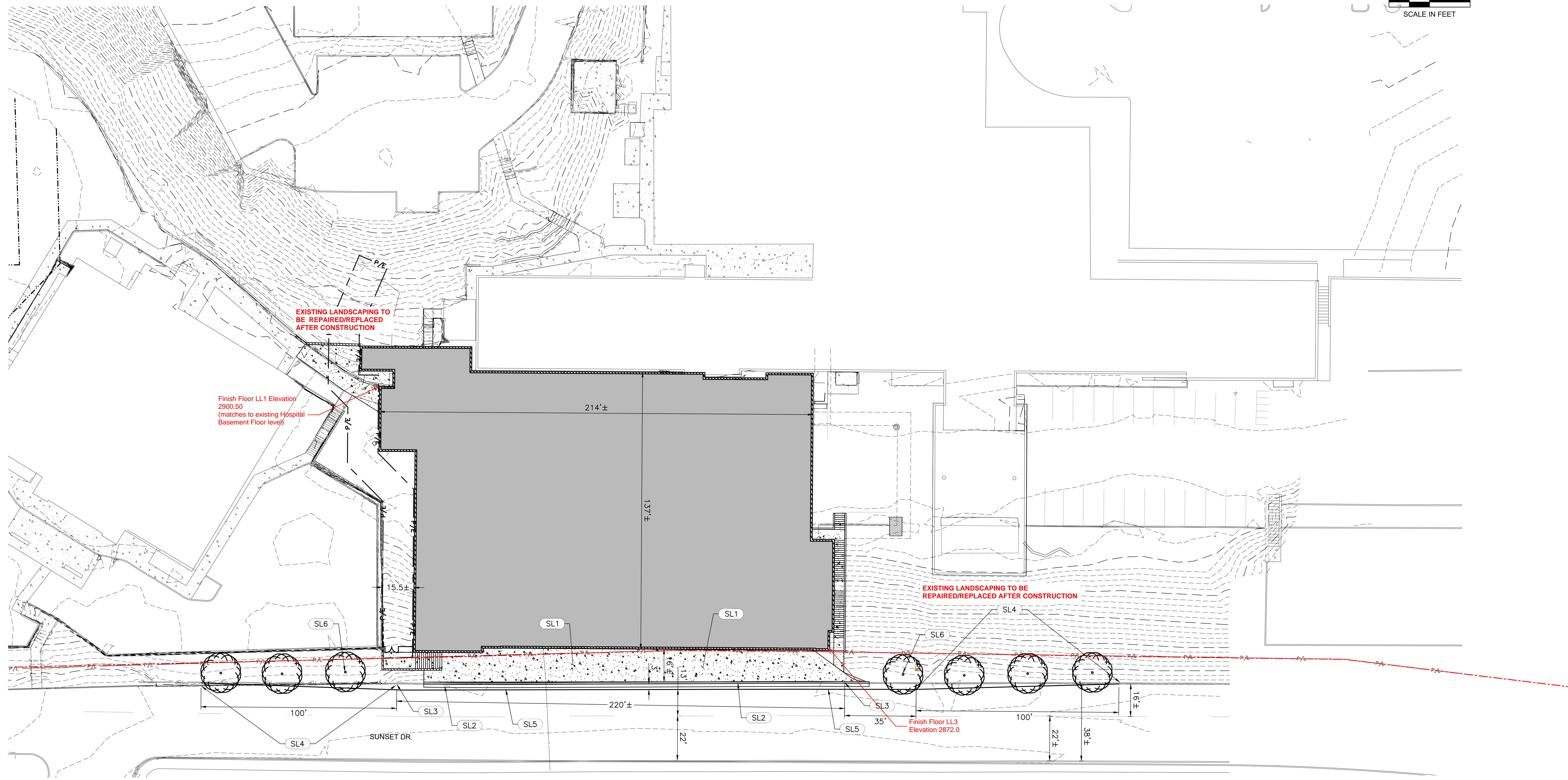
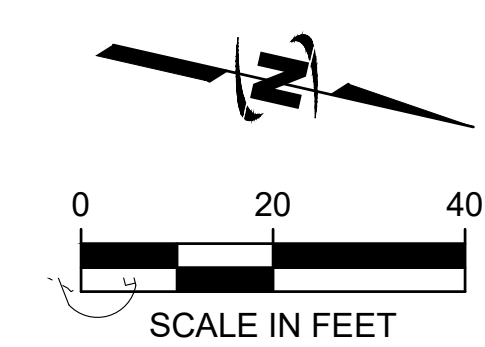
A.001



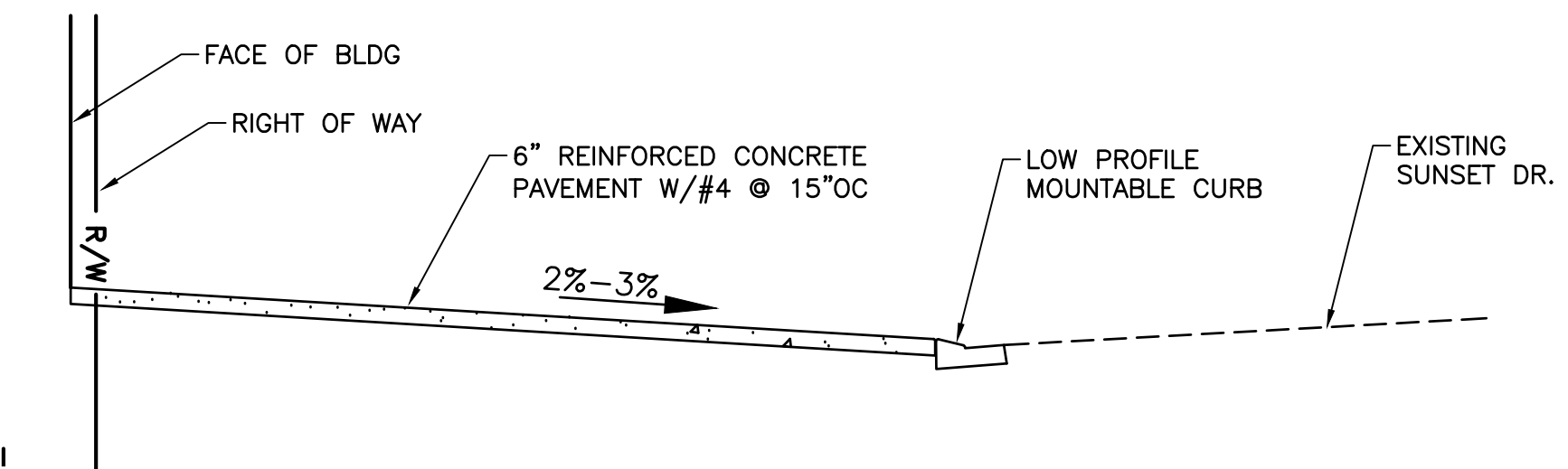
KEYED NOTES

- SANITARY SEWER**
- (S1) CONNECT TO EXISTING SSMH. CORE AT BASE OF MANHOLE AND RECHANNEL BASE.
 - (S2) 8" PVC SS (±380 LF)
 - (S3) SSMH, 48" DIA.
 - (S4) 6" PVC (± 40 LF)
- WATER**
- (W1) CONNECT TO EXISTING 8" W/L/ 8"x8" CUT-IN TEE AND 8" GATE VALVE
 - (W2) 8" FITTING
 - (W3) CONNECT TO EXISTING 8" W/L WITH 8" RJ 90° ELBOW AND 8" GATE VALVE
 - (W4) EXISTING 8" W/L TO BE ABANDONED IN-PLACE
 - (W5) EXISTING 8" W/L TO BE REMOVED UNDER PROPOSED BUILDING.
 - (W6) CUT AND CAP EXISTING 8" W/L AFTER EXISTING 8" GATE VALVE.
 - (W7) 8"x6" TAPPING TEE AND 6" GATE VALVE
 - (W8) 8"x4" TAPPING TEE AND 4" GATE VALVE
 - (W9) 3" WATER METER ASSEMBLY
 - (W10) 4" DI WATER LINE
 - (W11) 6" DI WATER LINE
 - (W12) EXISTING 6" AND 4" WATER LINES TO BE CUT FROM CITY MAIN. REPLACE SECTION OF CITY MAIN LINE TO REMOVE SERVICE CONNECTIONS. SALVAGE EXISTING WATER METERS AND RETURN TO THE CITY OF LA GRANDE PUBLIC WORKS.
 - (W13) EXISTING 6" AND 4" WATER LINES TO BE REMOVED FROM UNDERNEATH PROPOSED BUILDING. EXISTING SERVICE LINES TO REMAIN IN PLACE UNTIL NEW SERVICE LINES ARE CONNECTED TO CITY MAIN.
 - (W14) FIRE HYDRANT ASSEMBLY TO INCLUDE 8"x6" TAPPING SADDLE, 6" GATE VALVE, 6" DI PIPING AND THRUST BLOCKS.
 - (W15) CONNECT TO EXISTING 4" DOMESTIC WATERLINE WITH 4" 90° RJ ELBOW
 - (W16) CONNECT TO EXISTING 6" FIRE LINE WITH 6" 90° RJ ELBOW
 - (W17) 4" 90° RJ ELBOW
 - (W18) 6" 90° RJ ELBOW

- NOTES:**
1. CONTRACTOR SHALL SAWCUT EXISTING ASPHALT/CONCRETE SURFACES FOR INSTALLATION OF UTILITIES.
 2. CONTRACTOR SHALL REPAIR ASPHALT/CONCRETE/LANDSCAPE SURFACES THAT ARE DISTURBED/DAMAGED DURING CONSTRUCTION AND SHALL MATCH EXISTING CONDITIONS.
 3. CONTRACTOR SHALL PROVIDE VEHICULAR TRAFFIC AND PEDESTRIAN CONTROL AS NECESSARY TO CONSTRUCT THE IMPROVEMENTS.
 4. EXISTING WATER LINES SHALL BE KEPT ACTIVE UNTIL NEWLY REROUTED LINES ARE PUT IN PLACE AND ACCEPTED BY THE CITY OF LA GRANDE.

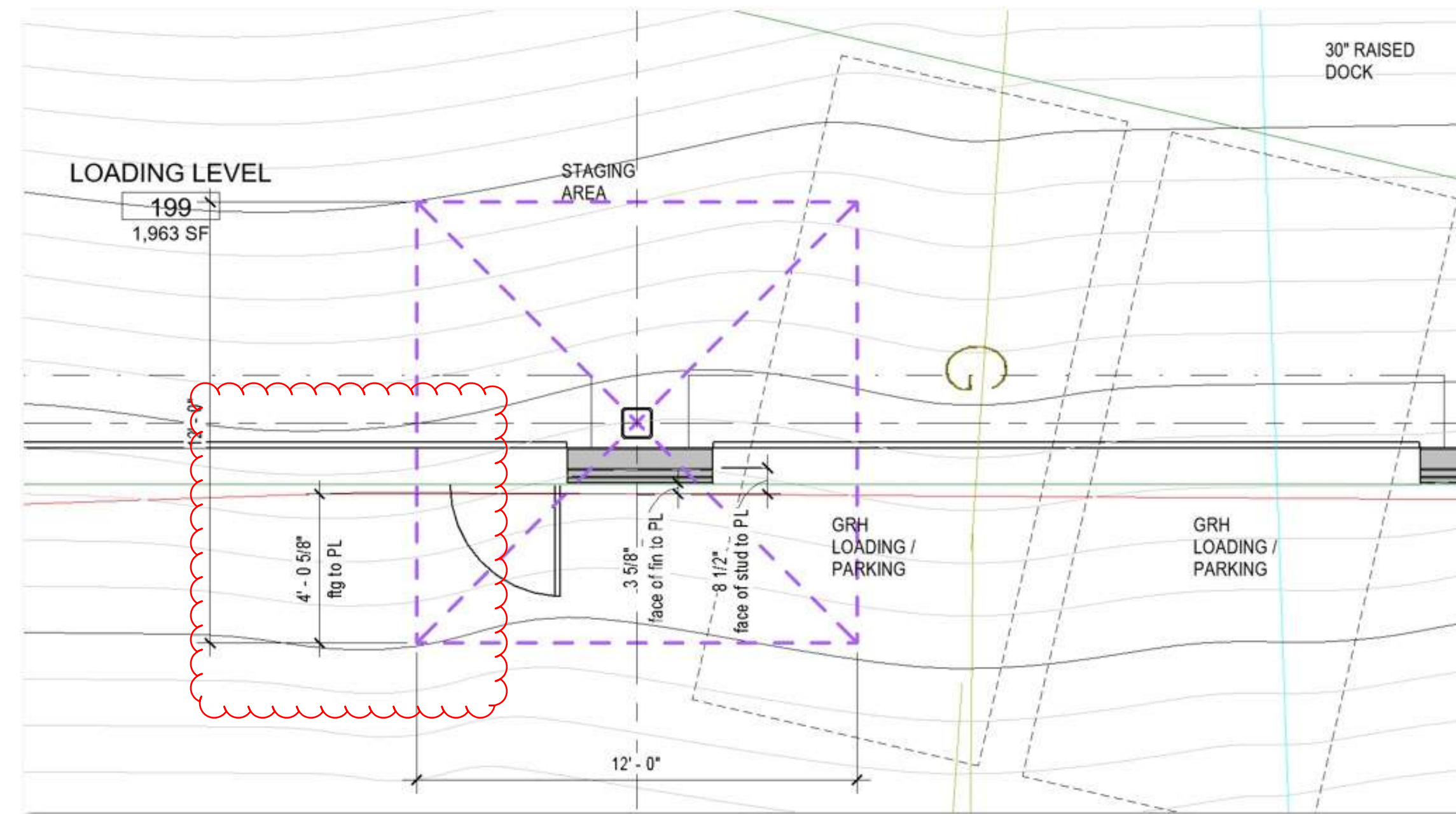


1 LOW PROFILE MOUNTABLE CURB
SCALE: N.T.S.



2 CONCRETE DRIVEWAY SECTION VIEW
SCALE: N.T.S.

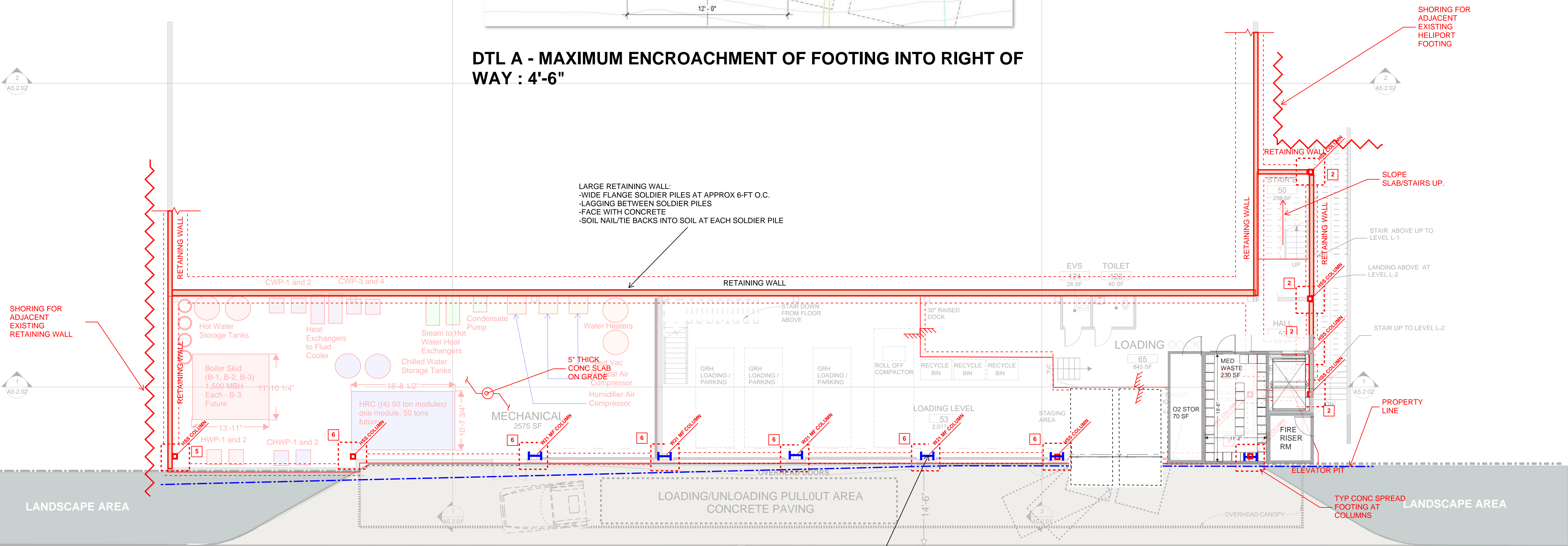
- KEYED NOTES**
- SITE LAYOUT**
- SL1 6" REINFORCED CONCRETE PAVEMENT W/#4 BAR @ 15" OC
 - SL2 LOW PROFILE MOUNTABLE CURB PER OSD RD700
 - SL3 MATCH TO EXISTING
 - SL4 4" WHITE EDGE LINE TAPER 33:1
 - SL5 4" WHITE EDGE LINE
 - SL6 STREET TREES, TYP.



DTL A - MAXIMUM ENCROACHMENT OF FOOTING INTO RIGHT OF WAY : 4'-6"

FOOTING SCHEDULE			
TYPE	SIZE	REINFORCING	NOTES
1	2'-0" WIDE x 16" DEEP x CONT		
2	4'-0" x 4'-0" x 12"	(4) #5 EACH WAY - EQ. SPACED AT BOT	
3	2'-0" x 6'-0" x 12"		
4	6'-0" x 6'-0" x 14"	(6) #5 EACH WAY - EQ. SPACED AT BOT	
5	8'-0" x 8'-0" x 18"	(8) #6 EACH WAY - EQ. SPACED AT BOT	
6	12'-0" x 12'-0" x 18"	(12) #6 EACH WAY - EQ. SPACED AT BOT	

NOTES:
 1. FOOTINGS SHALL BE CENTERED UNDER COLUMNS AND WALLS UNLESS NOTED OTHERWISE.

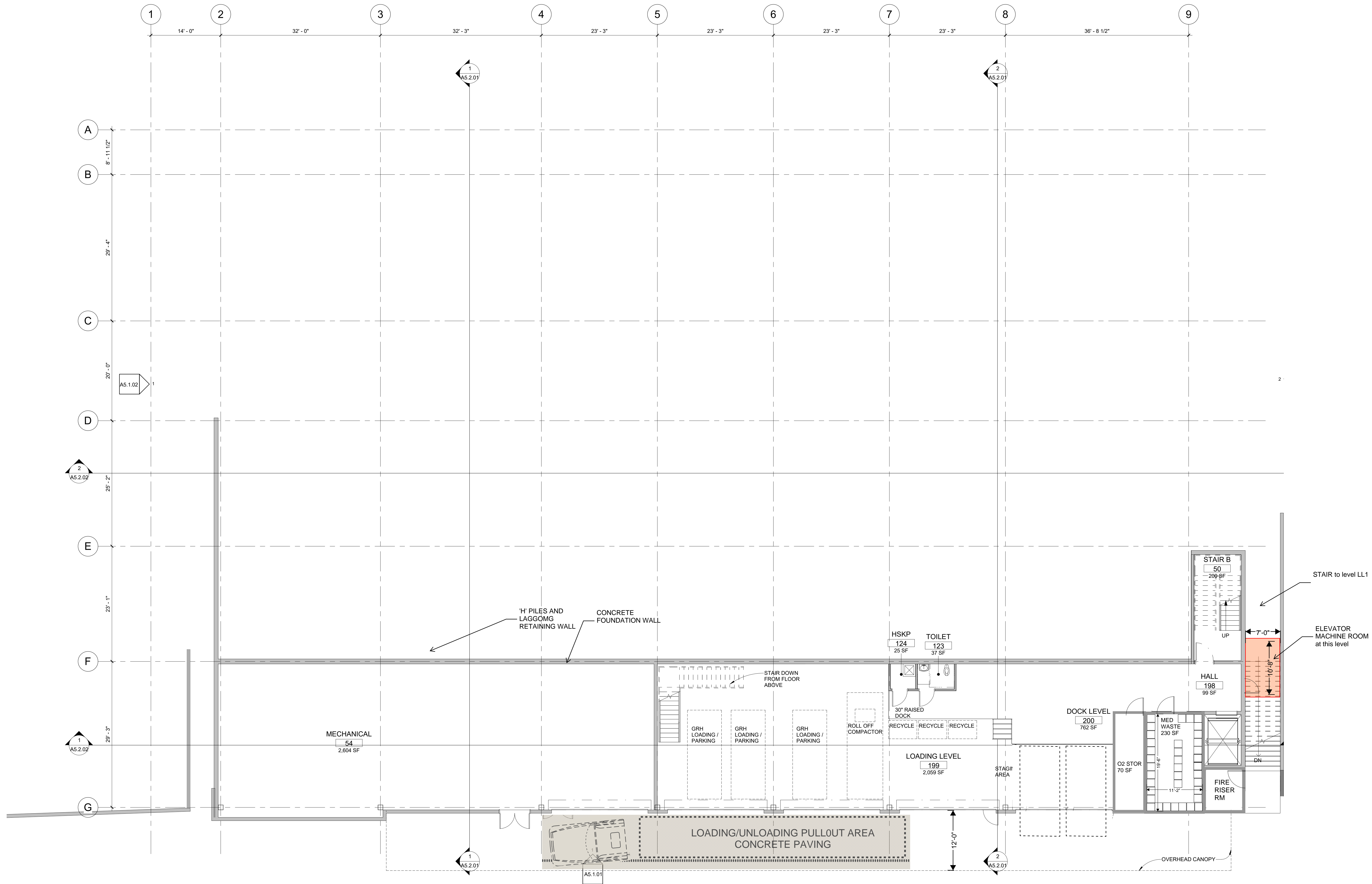


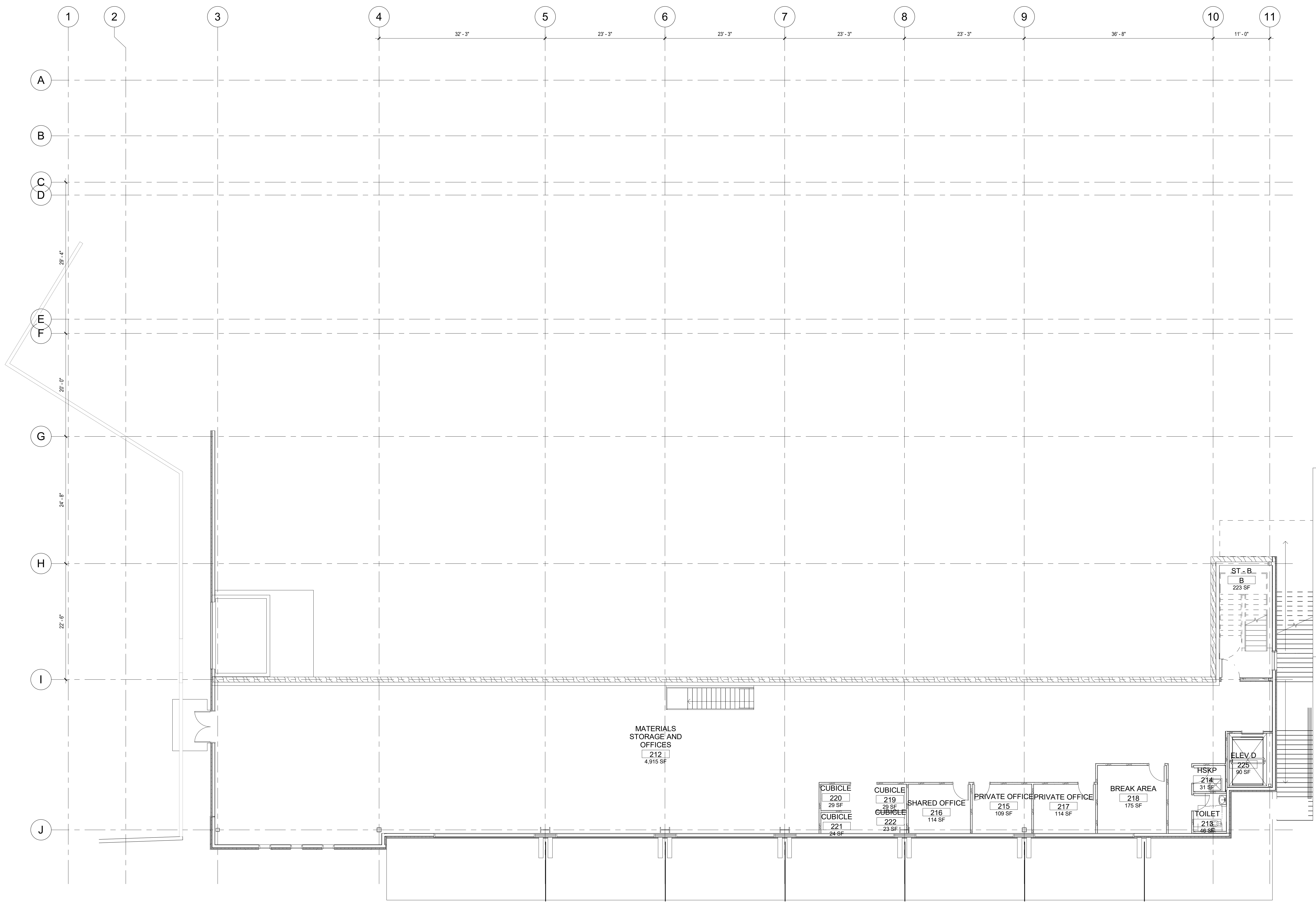
LARGE RETAINING WALL:
 -WIDE FLANGE SOLDIER PILES AT APPROX 6-FT O.C.
 -LAGGING BETWEEN SOLDIER PILES
 -FACE WITH CONCRETE
 -SOIL NAIL/TIE BACKS INTO SOIL AT EACH SOLDIER PILE

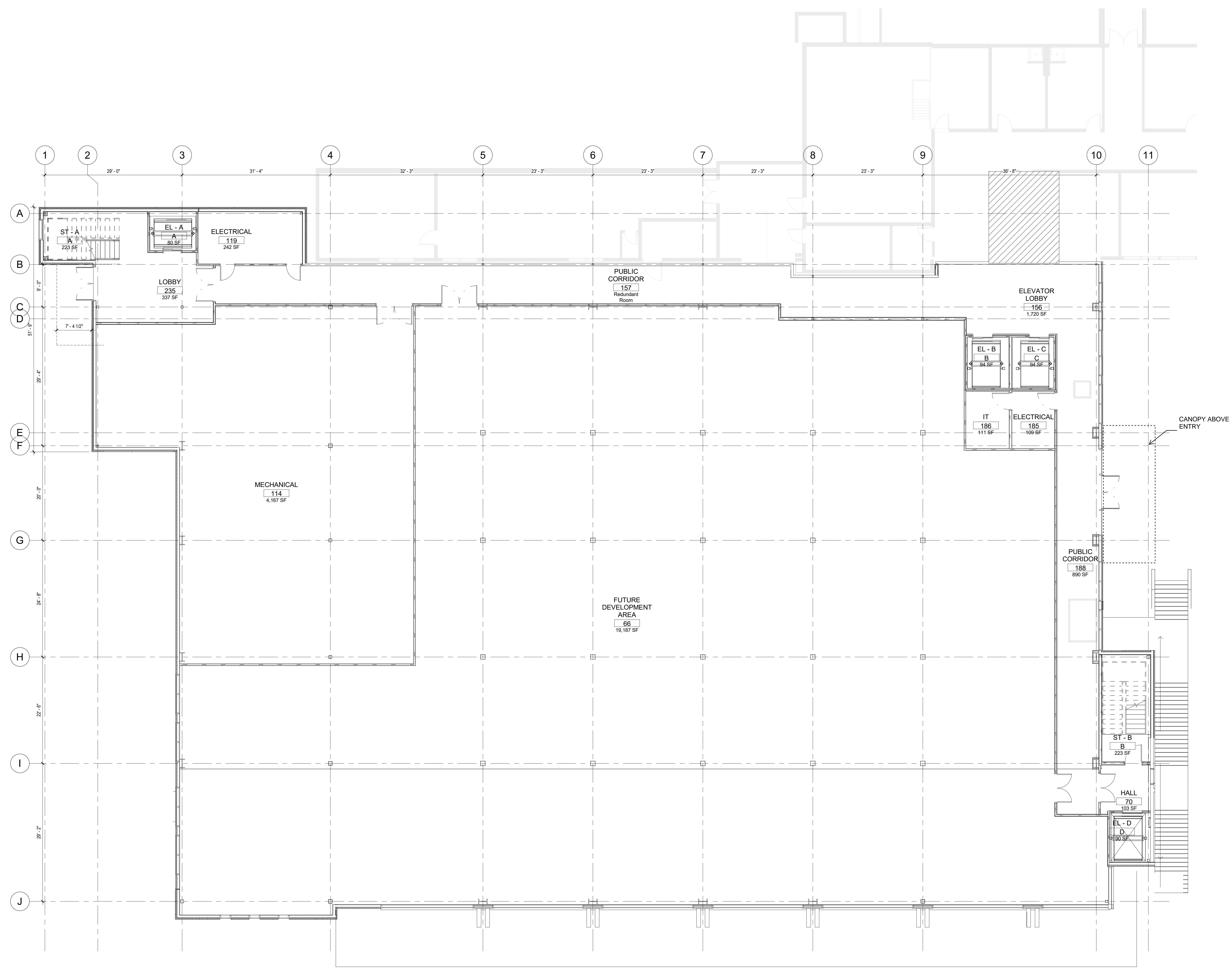
5" THICK CONC SLAB ON GRADE
 all Air Compressor
 Humidifier Air Compressor

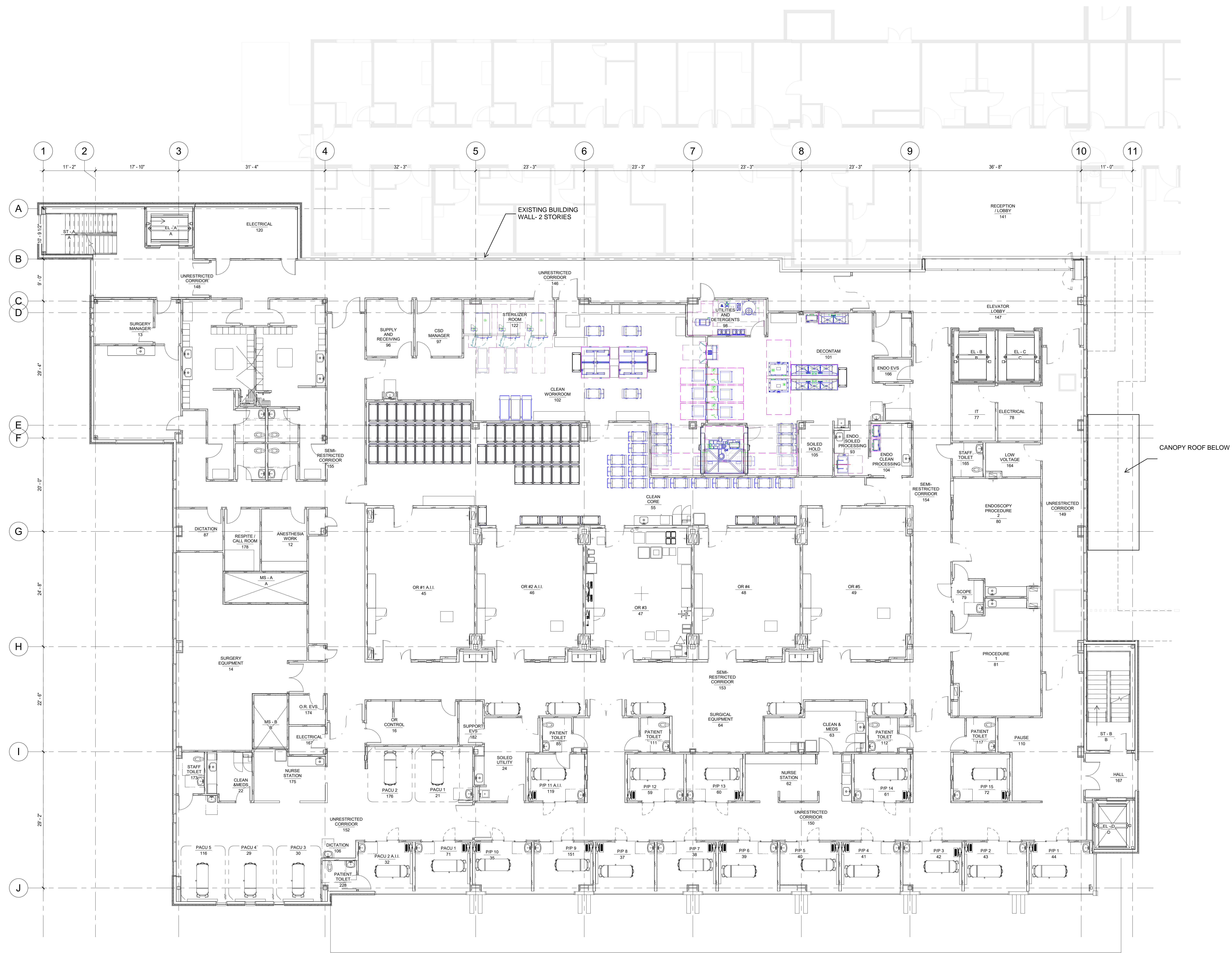
Edge of street pavement-see Civil Plan C-300

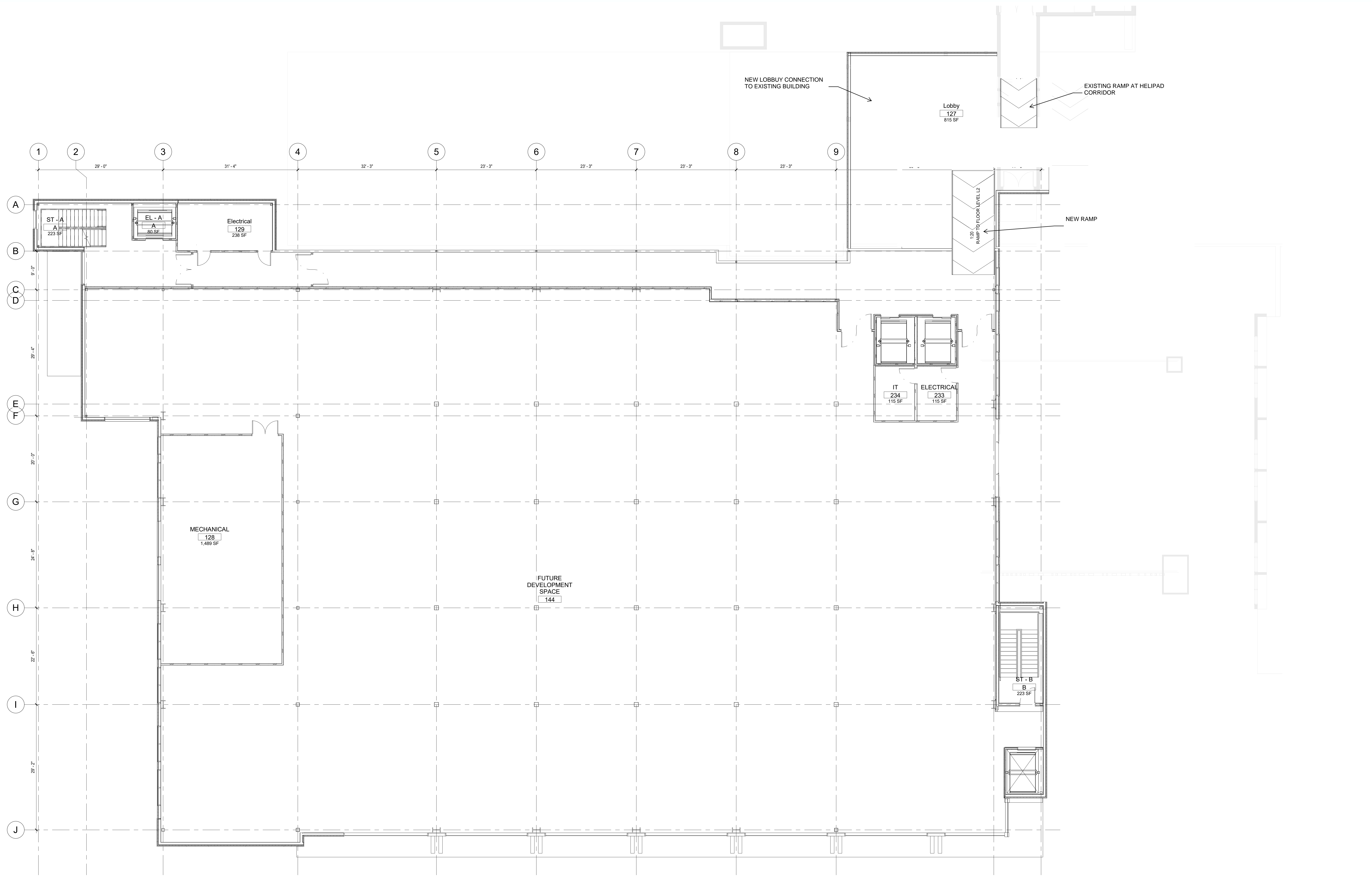
DTL 'A'

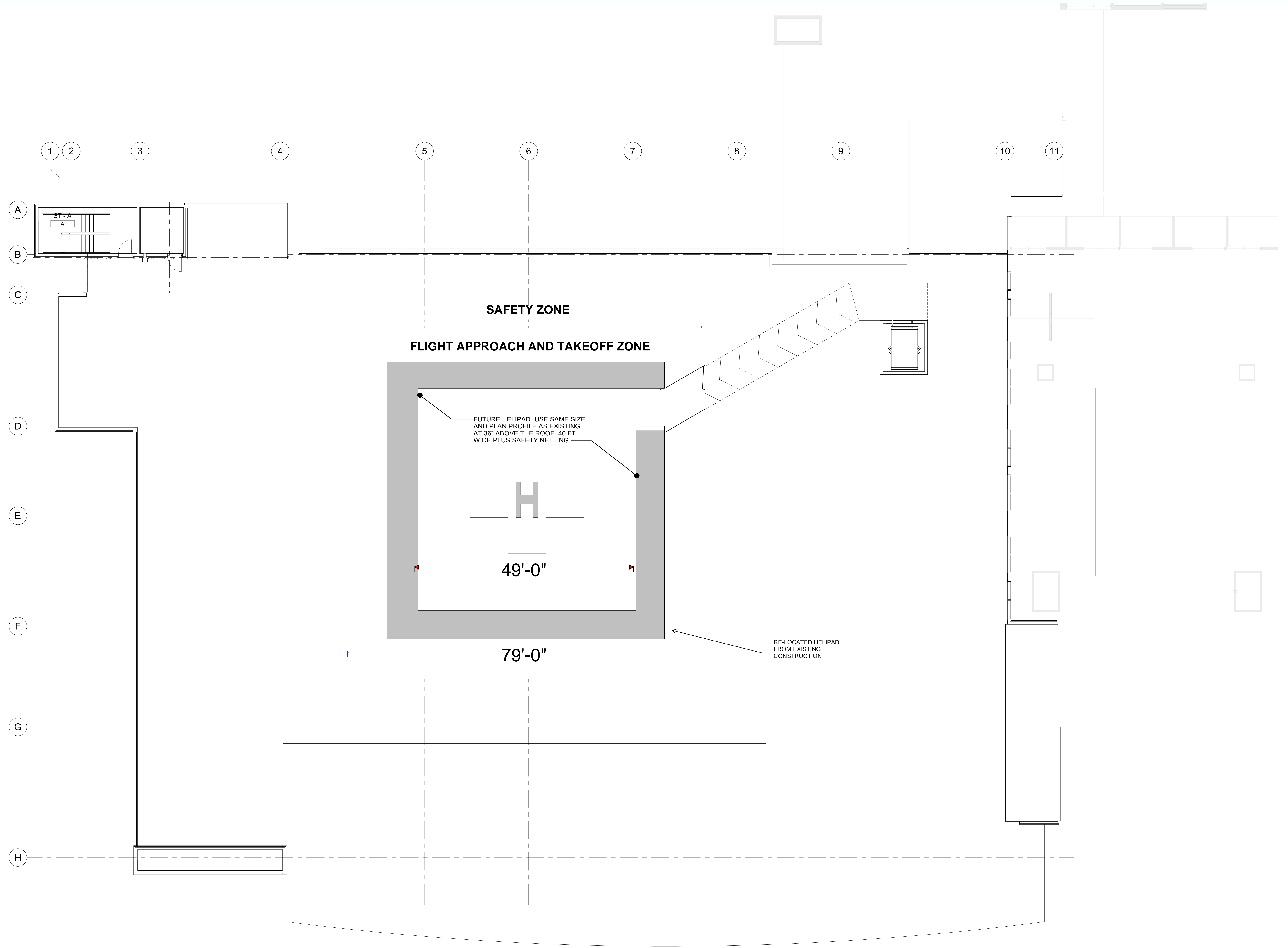


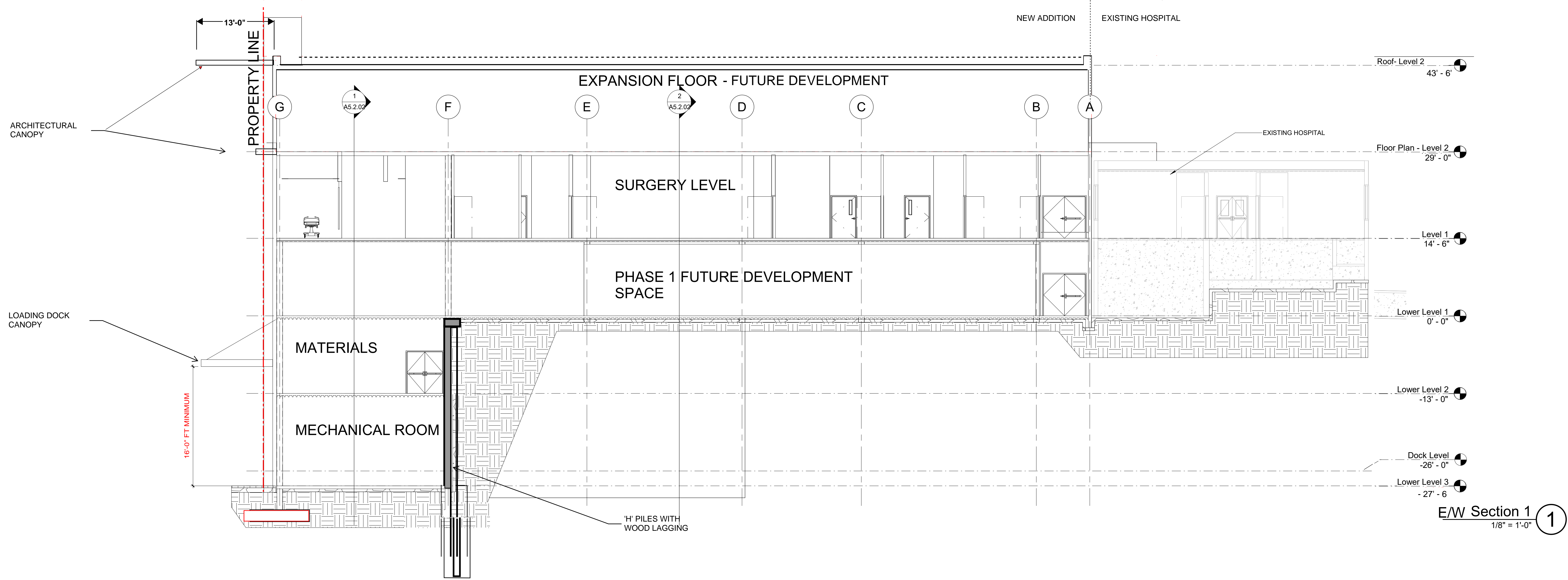
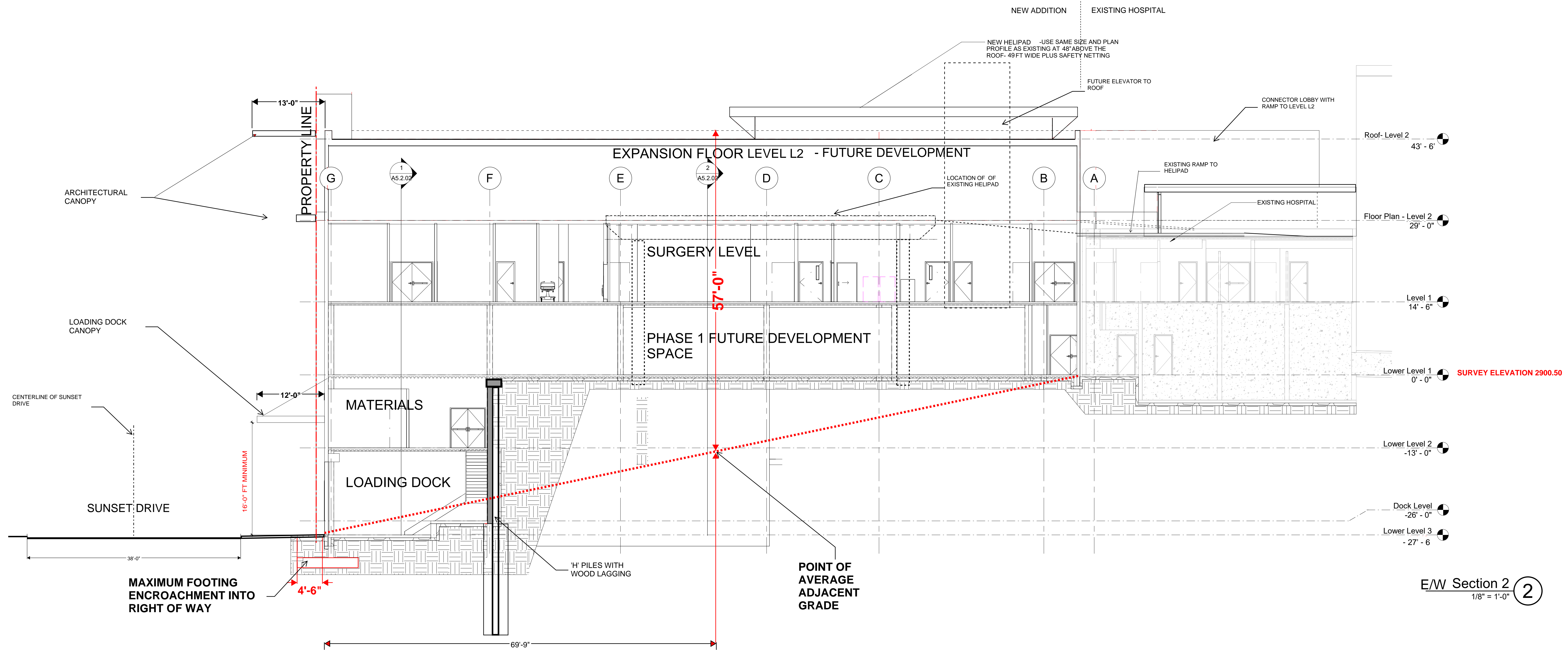


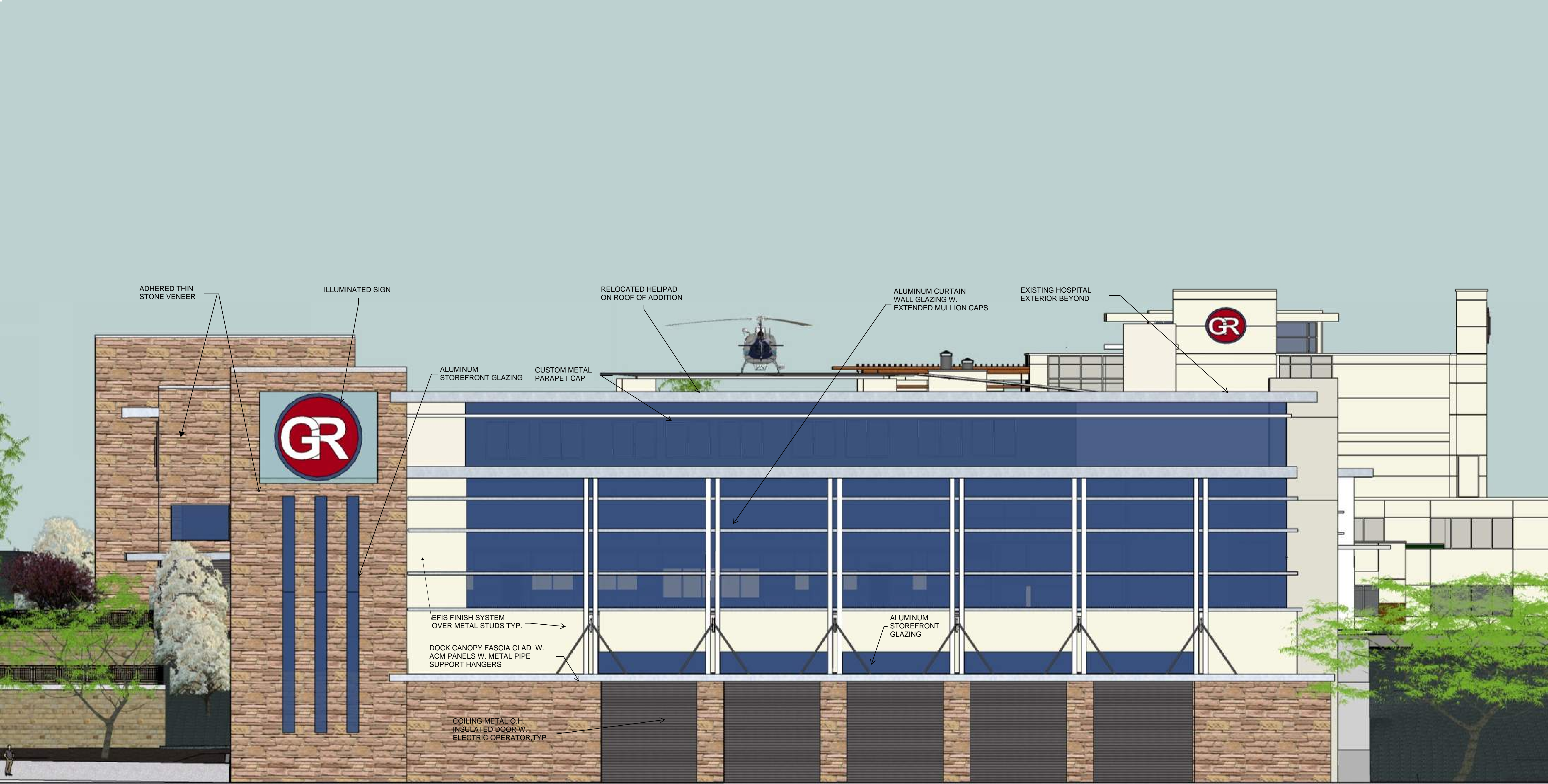












ADHERED THIN STONE VENEER

ILLUMINATED SIGN

RELOCATED HELIPAD ON ROOF OF ADDITION

ALUMINUM CURTAIN WALL GLAZING W. EXTENDED MULLION CAPS

EXISTING HOSPITAL EXTERIOR BEYOND

ALUMINUM STOREFRONT GLAZING

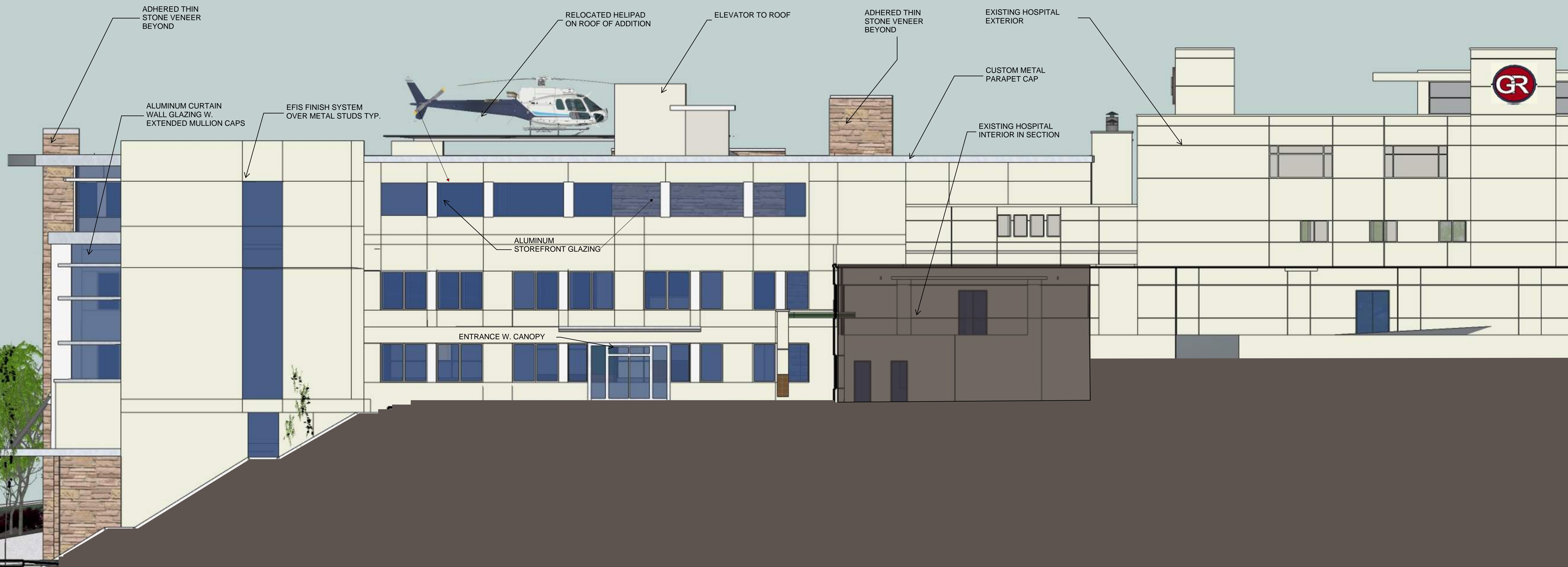
CUSTOM METAL PARAPET CAP

EFIS FINISH SYSTEM OVER METAL STUDS TYP.

DOCK CANOPY FASCIA CLAD W. ACM PANELS W. METAL PIPE SUPPORT HANGERS

ALUMINUM STOREFRONT GLAZING

COILING METAL O.H. INSULATED DOOR W. ELECTRIC OPERATOR, TYP.



ADHERED THIN STONE VENEER BEYOND

ALUMINUM CURTAIN WALL GLAZING W. EXTENDED MULLION CAPS

EFIS FINISH SYSTEM OVER METAL STUDS TYP.

RELOCATED HELIPAD ON ROOF OF ADDITION

ELEVATOR TO ROOF

ADHERED THIN STONE VENEER BEYOND

EXISTING HOSPITAL EXTERIOR

CUSTOM METAL PARAPET CAP

EXISTING HOSPITAL INTERIOR IN SECTION

ALUMINUM STOREFRONT GLAZING

ENTRANCE W. CANOPY



