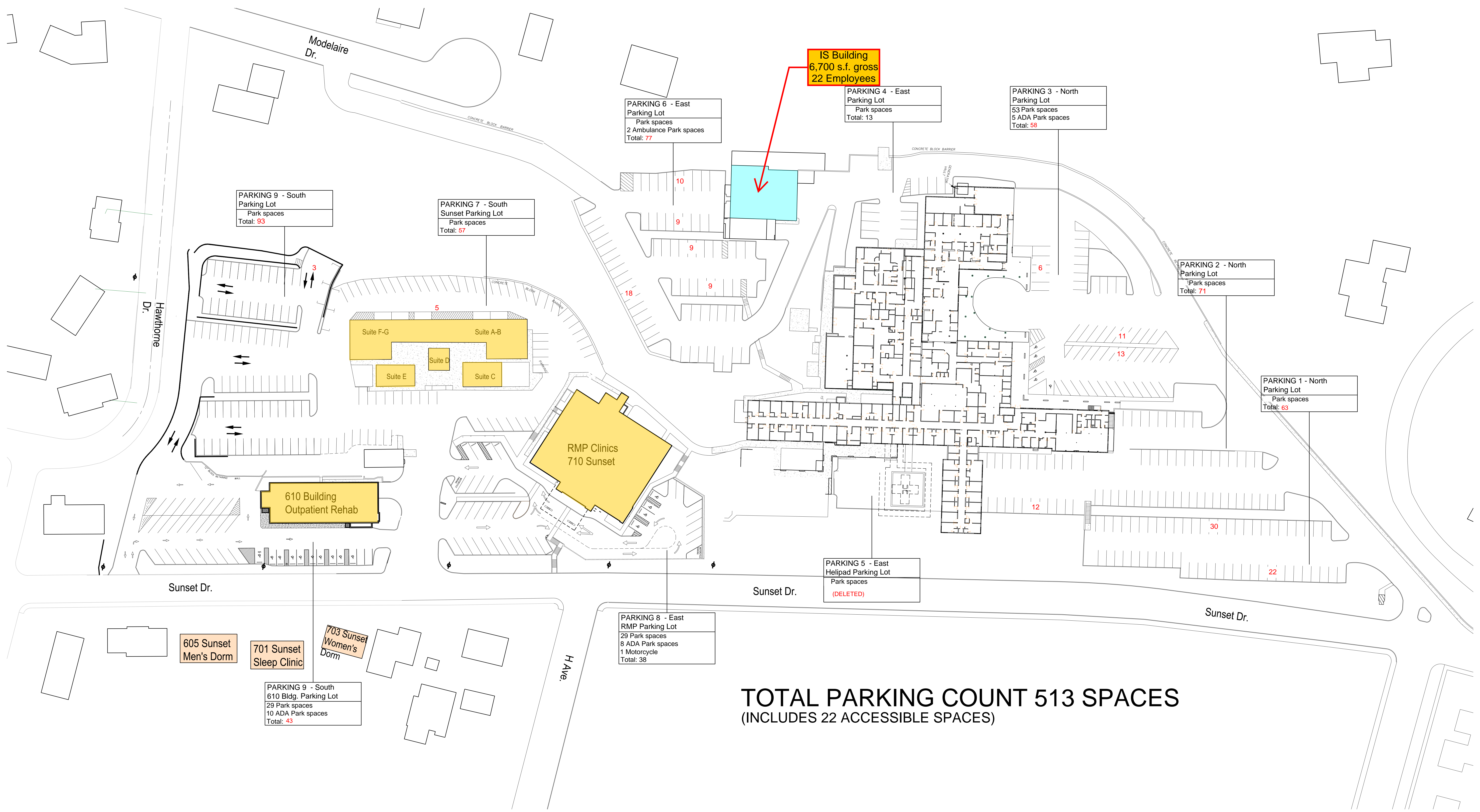


Parking Analysis



IS Building
6,700 s.f. gross
22 Employees

**PARKING 6 - East
Parking Lot**
Park spaces
2 Ambulance Park spaces
Total: 77

**PARKING 4 - East
Parking Lot**
Park spaces
Total: 13

**PARKING 3 - North
Parking Lot**
53 Park spaces
5 ADA Park spaces
Total: 58

**PARKING 9 - South
Parking Lot**
Park spaces
Total: 93

**PARKING 7 - South
Sunset Parking Lot**
Park spaces
Total: 57

**PARKING 2 - North
Parking Lot**
Park spaces
Total: 71

Suite F-G Suite A-B
Suite E Suite D Suite C

**RMP Clinics
710 Sunset**

**610 Building
Outpatient Rehab**

**PARKING 1 - North
Parking Lot**
Park spaces
Total: 63

**PARKING 5 - East
Helipad Parking Lot**
Park spaces
(DELETED)

Sunset Dr.

Sunset Dr.

Sunset Dr.

605 Sunset
Men's Dorm

701 Sunset
Sleep Clinic

703 Sunset
Women's
Dorm

**PARKING 8 - East
RMP Parking Lot**
29 Park spaces
8 ADA Park spaces
1 Motorcycle
Total: 38

H Ave

TOTAL PARKING COUNT 513 SPACES
(INCLUDES 22 ACCESSIBLE SPACES)

GRANDE RONDE HOSPITAL SITE PARKING ANALYSIS

PARKING REQUIREMENTS BY CITY OF LAGRANDE MUNICIPAL PARKING CODE

GRANDE RONDE MAIN HOSPITAL CAMPUS : PARKING SPACES REQUIRED

BUILDING	FLOOR LEVEL	MEDICAL SERVICES @ 1/300 SF	INPATIENT @ 2 PER BED	NON MEDICAL SERVICES @ 1:400	SPACES @ 1/EMPLOYEE	TOTAL PARKING REQUIRED
MAIN HOSPITAL	BASEMENT	721 SF = 3 SPACES		8,333 (EMPLOYEE COUNT GOVERNS)	43 SPACES	46
MAIN HOSPITAL	FIRST FLOOR	11697 = 39 SPACES		12,502 SF -(EMPLOYEE COUNT GOVERNS)	104 SPACES	143
MAIN HOSPITAL	SECOND FLOOR		25 BEDS = 50 SPACES	(BED COUNT GOVERNS)		50
MAIN HOSPITAL	THIRD FLOOR		N/A-(Part of 25 bed maximum)			0
IS BUILDING	FL 1&2			1 SPACE PER EMPLOYEE	22 SPACES	22
SUBTOTAL						261

BLDG 610	OUTPATIENT REHAB	2923 SF = 10 SPACES			29 SPACES	39
RMP	FIRST FLOOR	4136 SF= 14 SPACES			36 SPACES	50
RMP	SECOND FLOOR	4404 SF= 15 SPACES			35 SPACES	50
MEDICAL CONDOS		2041SF= 7 SPACES			26 SPACES	31
SUBTOTAL						170

SURGERY EXPANSION	LEVEL 2			(SHELL SPACE NON OCCUPIED)		0
SURGERY EXPANSION	LEVEL 1	3530 SF = 12 SPACES			11 SPACES	23
SURGERY EXPANSION	LEVEL LL1			(SHELL SPACE NON OCCUPIED)		0
SURGERY EXPANSION	LEVEL LL2	(STAFF OFFICES)		755 SF - EMPLOYEE COUNT GOVERNS	7 SPACES	7
SURGERY EXPANSION	LEVEL LL3			(NON OCCUPIED)		0
SUBTOTAL						30

GRANDE TOTAL 461

AVAILABLE PARKING ON SITE: 513

CITY OF LA GRANDE PARKING CODE LEGEND

- Hospitals: (Inpatient Beds) **Vehicle** - Two (2) spaces for each bed.
Bicycle - Minimum of ten percent (10%) of the required vehicular parking with a minimum of two (2) spaces.
- Medical or dental clinics and medical professional schools: **Vehicle** - One (1) space for each doctor and each employee plus one (1) space for each 300 square feet of gross floor area.
Bicycle - Minimum of ten percent (10%) of the required vehicular parking with a minimum of two (2) spaces.
- Offices not providing customer service on the premises: **Vehicle** - One (1) space for each employee or one (1) space for each 400 square feet of gross floor area, whichever amount is greater.
Bicycle - Minimum of ten percent (10%) of the required vehicular parking with a minimum of two (2) spaces.
- Vacated Areas



PARKING CALCULATION: MEDICAL SERVICES

XX SF DESIGNATES SQUARE FOOT AREA OF MEDICAL TREATMENT SERVICES

721SF MEDICAL TREATMENT SPACE:
@ /1: 300 SF = 3 SPACES

+
4 DEDICATED EMPLOYEES
(THIS FLOOR) = 4 SPACES

SUBTOTAL = 7 SPACES

PARKING CALCULATION: SUPPORT/OFFICE SERVICES

XX SF DESIGNATES SQUARE FOOT AREA OF SUPPORT/OFFICE SERVICES

8,333 SF SUPPORT/OFFICE SPACE: @/1: 400 SF = 21 SPACES (CALCULATION NOT USED)

OR GREATER OF:

39 DEDICATED EMPLOYEES (THIS FLOOR)
SUBTOTAL = 39 SPACES

TOTAL REQUIRED PARKING THIS FLOOR = 46 SPACES

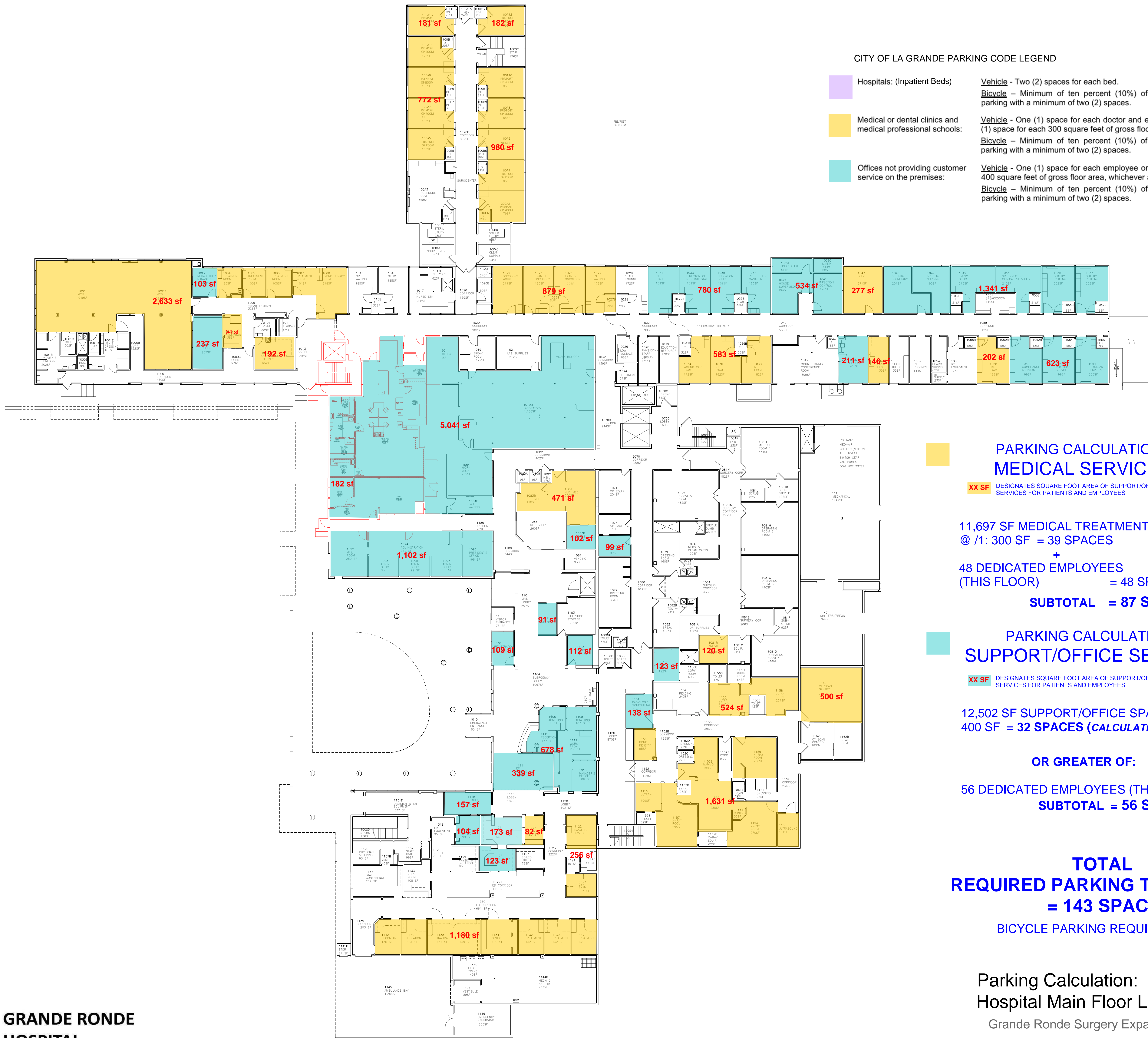
BICYCLE PARKING REQUIRED: = 5

Parking Calculation: Hospital Basement Level

Grande Ronde Surgery Expansion
01/28/22
Project Number: 200913

CITY OF LA GRANDE PARKING CODE LEGEND

- Hospitals: (Inpatient Beds)
 - Vehicle** - Two (2) spaces for each bed.
 - Bicycle** - Minimum of ten percent (10%) of the required vehicular parking with a minimum of two (2) spaces.
- Medical or dental clinics and medical professional schools:
 - Vehicle** - One (1) space for each doctor and each employee plus one (1) space for each 300 square feet of gross floor area.
 - Bicycle** - Minimum of ten percent (10%) of the required vehicular parking with a minimum of two (2) spaces.
- Offices not providing customer service on the premises:
 - Vehicle** - One (1) space for each employee or one (1) space for each 400 square feet of gross floor area, whichever amount is greater.
 - Bicycle** - Minimum of ten percent (10%) of the required vehicular parking with a minimum of two (2) spaces.



PARKING CALCULATION: MEDICAL SERVICES

XX SF DESIGNATES SQUARE FOOT AREA OF SUPPORT/OFFICE SERVICES FOR PATIENTS AND EMPLOYEES

11,697 SF MEDICAL TREATMENT SPACE:
@ /1: 300 SF = 39 SPACES

+

48 DEDICATED EMPLOYEES (THIS FLOOR) = 48 SPACES

SUBTOTAL = 87 SPACES

PARKING CALCULATION: SUPPORT/OFFICE SERVICES

XX SF DESIGNATES SQUARE FOOT AREA OF SUPPORT/OFFICE SERVICES FOR PATIENTS AND EMPLOYEES

12,502 SF SUPPORT/OFFICE SPACE: @/1: 400 SF = 32 SPACES (CALCULATION NOT USED)

OR GREATER OF:

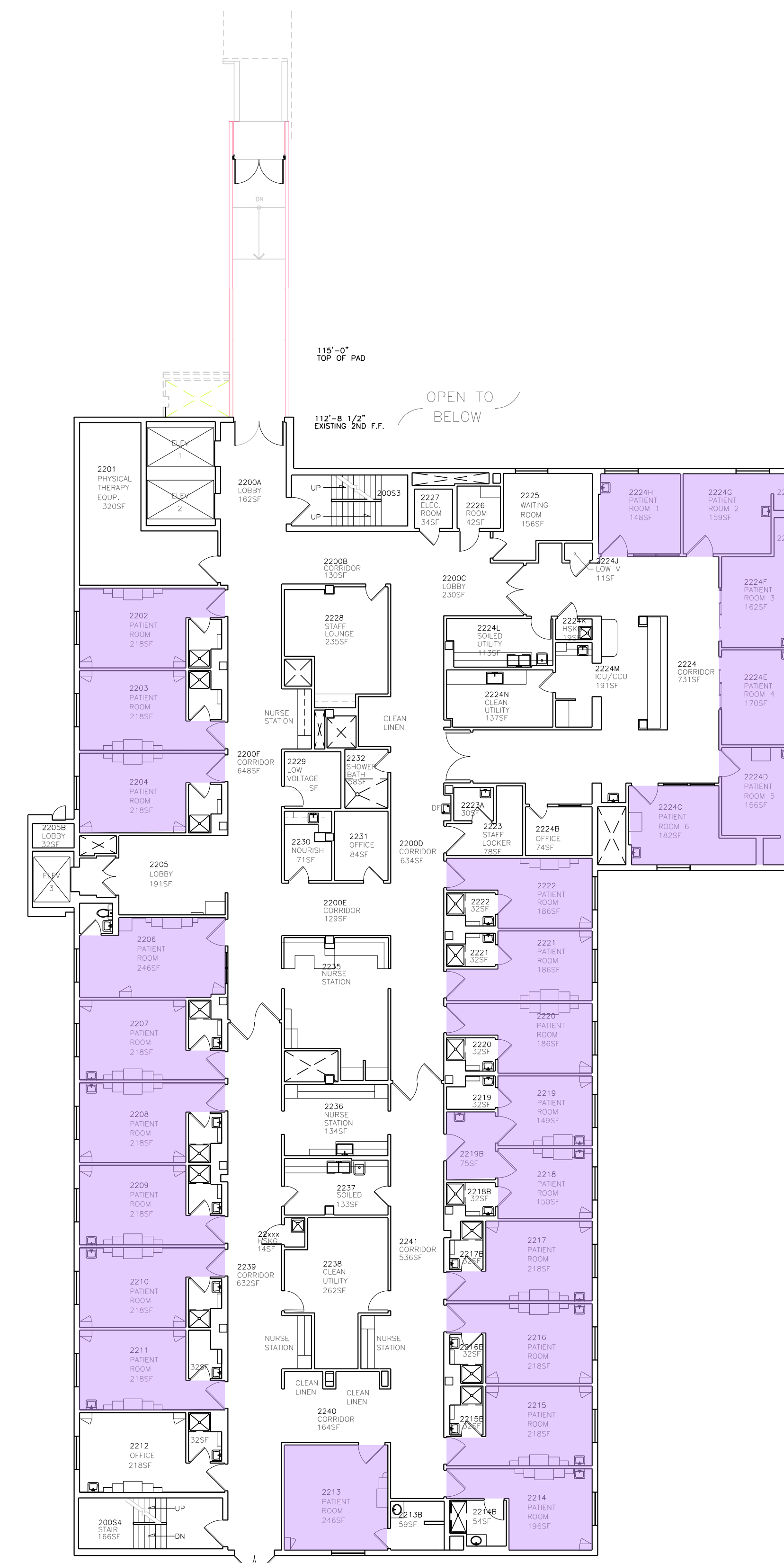
56 DEDICATED EMPLOYEES (THIS FLOOR) SUBTOTAL = 56 SPACES

TOTAL REQUIRED PARKING THIS FLOOR = 143 SPACES

BICYCLE PARKING REQUIRED: = 15

CITY OF LA GRANDE PARKING CODE LEGEND

<p> Hospitals: (Inpatient Beds)</p> <p> Medical or dental clinics and medical professional schools:</p> <p> Offices not providing customer service on the premises:</p> <p> Vacated Areas</p>	<p><u>Vehicle</u> - Two (2) spaces for each bed.</p> <p><u>Bicycle</u> - Minimum of ten percent (10%) of the required vehicular parking with a minimum of two (2) spaces.</p> <p><u>Vehicle</u> - One (1) space for each doctor and each employee plus one (1) space for each 300 square feet of gross floor area.</p> <p><u>Bicycle</u> - Minimum of ten percent (10%) of the required vehicular parking with a minimum of two (2) spaces.</p> <p><u>Vehicle</u> - One (1) space for each employee or one (1) space for each 400 square feet of gross floor area, whichever amount is greater.</p> <p><u>Bicycle</u> - Minimum of ten percent (10%) of the required vehicular parking with a minimum of two (2) spaces.</p>
---	--



**PARKING CALCULATION :
HOSPITAL SERVICES**

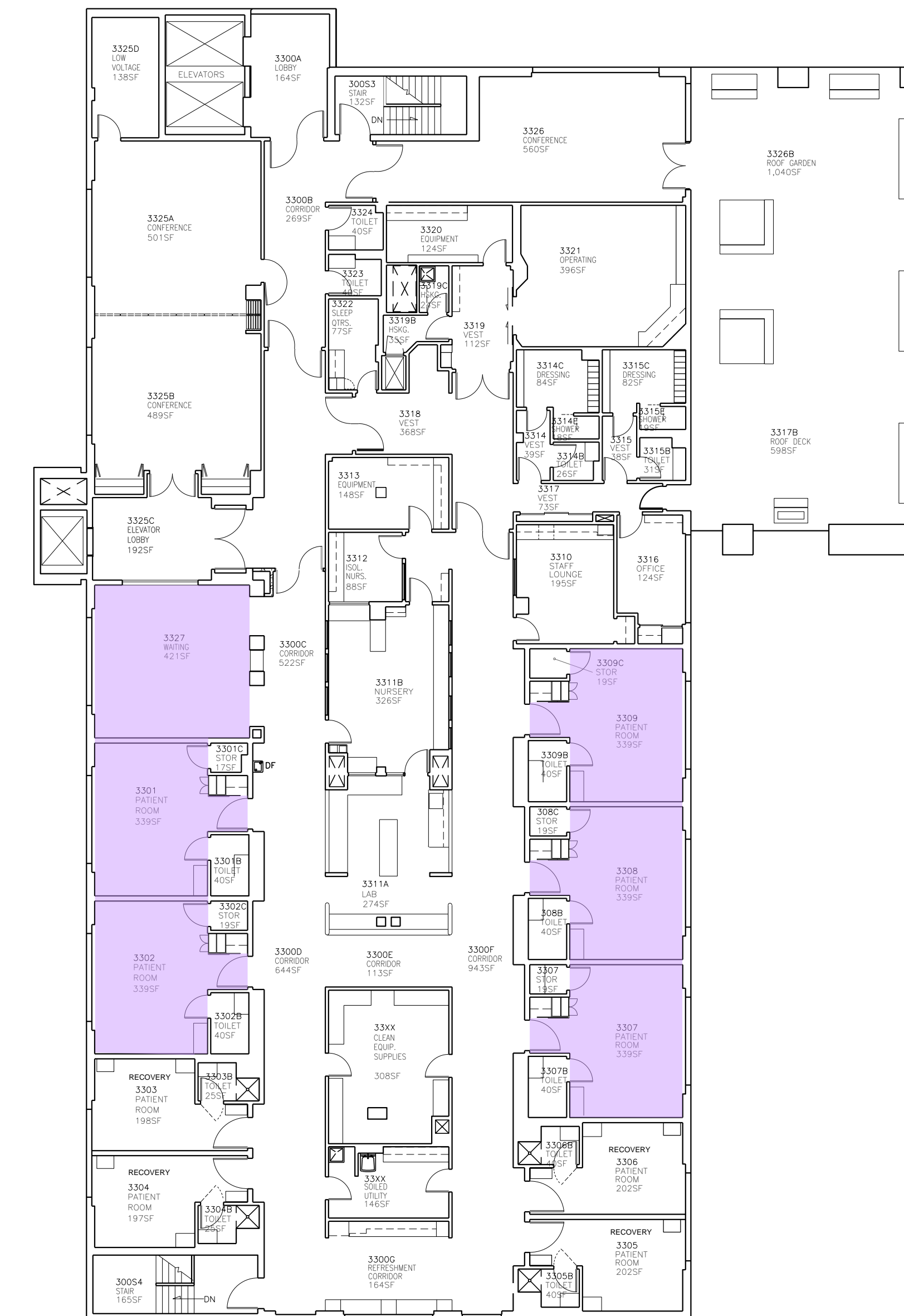
25 INPATIENT BEDS = 50 SPACES

**TOTAL
REQUIRED PARKING THIS FLOOR
= 50 SPACES**

BICYCLE PARKING REQUIRED: = 5

CITY OF LA GRANDE PARKING CODE LEGEND

<p> Hospitals: (Inpatient Beds)</p> <p> Medical or dental clinics and medical professional schools:</p> <p> Offices not providing customer service on the premises:</p> <p> Vacated Areas</p>	<p><u>Vehicle</u> - Two (2) spaces for each bed.</p> <p><u>Bicycle</u> - Minimum of ten percent (10%) of the required vehicular parking with a minimum of two (2) spaces.</p> <p><u>Vehicle</u> - One (1) space for each doctor and each employee plus one (1) space for each 300 square feet of gross floor area.</p> <p><u>Bicycle</u> - Minimum of ten percent (10%) of the required vehicular parking with a minimum of two (2) spaces.</p> <p><u>Vehicle</u> - One (1) space for each employee or one (1) space for each 400 square feet of gross floor area, whichever amount is greater.</p> <p><u>Bicycle</u> - Minimum of ten percent (10%) of the required vehicular parking with a minimum of two (2) spaces.</p>
---	--



THIRD FLOOR PLAN
SCALE:

**PARKING CALCULATION :
HOSPITAL SERVICES**

6 INPATIENT BEDS = 12 SPACES

**TOTAL
REQUIRED PARKING THIS FLOOR
= 0 SPACES**
*(MAXIMUM OF 25 BEDS IS LIMITED BY HOSPITAL
LICENSING)*

BICYCLE PARKING REQUIRED: 2



**PARKING CALCULATION:
MEDICAL SERVICES
(REHABILITATION)**

XX SF DESIGNATES SQUARE FOOT AREA OF PATIENT MEDICAL SERVICES & SUPPORT/OFFICE SERVICE EMPLOYEES

CITY OF LA GRANDE PARKING CODE

- Hospitals:
Vehicle - Two (2) spaces for each bed.
Bicycle - Minimum of ten percent (10%) of the required vehicular parking with a minimum of two (2) spaces.
- Medical or dental clinics and medical professional schools:
Vehicle - One (1) space for each doctor and each employee plus one (1) space for each 300 square feet of gross floor area.
Bicycle - Minimum of ten percent (10%) of the required vehicular parking with a minimum of two (2) spaces.
- Offices not providing customer service on the premises:
Vehicle - One (1) space for each employee or one (1) space for each 400 square feet of gross floor area, whichever amount is greater.
Bicycle - Minimum of ten percent (10%) of the required vehicular parking with a minimum of two (2) spaces.

2923 SF MEDICAL TREATMENT SPACE: @ 1: 300 SF = 10 SPACES

**+
EMPLOYEE WORK AREAS :
29 EMPLOYEES = 29 SPACES
(AS GREATER OF 1/400 OR NUMBER OF EMPLOYEES)**

SUBTOTAL = 39 SPACES

**TOTAL
REQUIRED PARKING THIS BUILDING
= 39 SPACES**

BICYCLE PARKING REQUIRED: = 4

**Parking Calculation:
Building 610 - Occupational Rehabilitation**

Grande Ronde Surgery Expansion

01/28/22

Project Number: 200913



CITY OF LA GRANDE PARKING CODE

- Hospitals:
 - Vehicle** - Two (2) spaces for each bed.
 - Bicycle** - Minimum of ten percent (10%) of the required vehicular parking with a minimum of two (2) spaces.
- Medical or dental clinics and medical professional schools:
 - Vehicle** - One (1) space for each doctor and each employee plus one (1) space for each 300 square feet of gross floor area.
 - Bicycle** - Minimum of ten percent (10%) of the required vehicular parking with a minimum of two (2) spaces.
- Offices not providing customer service on the premises:
 - Vehicle** - One (1) space for each employee or one (1) space for each 400 square feet of gross floor area, whichever amount is greater.
 - Bicycle** - Minimum of ten percent (10%) of the required vehicular parking with a minimum of two (2) spaces.

**PARKING CALCULATION:
MEDICAL SERVICES**

XX SF DESIGNATES SQUARE FOOT AREA OF PATIENT MEDICAL SERVICES & SUPPORT/OFFICE SERVICE EMPLOYEES

4136 SF MEDICAL TREATMENT SPACE: @ /1: 300 SF = **14 SPACES**

+

EMPLOYEE WORK AREAS :

36 EMPLOYEES (AS GREATER OF 1/400 OR NUMBER OF EMPLOYEES) = **36 SPACES**

SUBTOTAL = 50 SPACES

**TOTAL
REQUIRED PARKING THIS BUILDING
= 50 SPACES**

BICYCLE PARKING REQUIRED: = 5



CITY OF LA GRANDE PARKING CODE

- Hospitals:
 - Vehicle** - Two (2) spaces for each bed.
 - Bicycle** - Minimum of ten percent (10%) of the required vehicular parking with a minimum of two (2) spaces.
- Medical or dental clinics and medical professional schools:
 - Vehicle** - One (1) space for each doctor and each employee plus one (1) space for each 300 square feet of gross floor area.
 - Bicycle** - Minimum of ten percent (10%) of the required vehicular parking with a minimum of two (2) spaces.
- Offices not providing customer service on the premises:
 - Vehicle** - One (1) space for each employee or one (1) space for each 400 square feet of gross floor area, whichever amount is greater.
 - Bicycle** - Minimum of ten percent (10%) of the required vehicular parking with a minimum of two (2) spaces.

**PARKING CALCULATION:
MEDICAL SERVICES**

XX SF DESIGNATES SQUARE FOOT AREA OF PATIENT MEDICAL SERVICES & SUPPORT/OFFICE SERVICE EMPLOYEES

- 4404 SF MEDICAL TREATMENT SPACE: @ /1: 300 SF = 15 SPACES
- +
- EMPLOYEE WORK AREAS :
- 35 EMPLOYEES = 35 SPACES
(AS GREATER OF 1/400 OR NUMBER OF EMPLOYEES)
- SUBTOTAL = 50 SPACES**

**TOTAL
REQUIRED PARKING THIS BUILDING
= 50 SPACES**

BICYCLE PARKING REQUIRED: = 5



CITY OF LA GRANDE PARKING CODE

	Hospitals:	<u>Vehicle</u> - Two (2) spaces for each bed. <u>Bicycle</u> - Minimum of ten percent (10%) of the required vehicular parking with a minimum of two (2) spaces.
	Medical or dental clinics and medical professional schools:	<u>Vehicle</u> - One (1) space for each doctor and each employee plus one (1) space for each 300 square feet of gross floor area. <u>Bicycle</u> - Minimum of ten percent (10%) of the required vehicular parking with a minimum of two (2) spaces.
	Offices not providing customer service on the premises:	<u>Vehicle</u> - One (1) space for each employee or one (1) space for each 400 square feet of gross floor area, whichever amount is greater. <u>Bicycle</u> - Minimum of ten percent (10%) of the required vehicular parking with a minimum of two (2) spaces.

**PARKING CALCULATION
MEDICAL SERVICES
(CLINICS)**

2041 SF MEDICAL TREATMENT
SPACE: /1: 300 SF = 7 SPACES

26 DEDICATED EMPLOYEES
= 26 SPACES

**TOTAL
REQUIRED PARKING THIS FLOOR
= 33 SPACES**

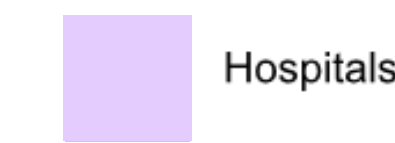
BICYCLE PARKING REQUIRED: = 4

Parking Calculation:
Medical Condos - Floor 1

Grande Ronde Surgery Expansion

01/28/22

Project Number: 200913



Hospitals:

Vehicle - Two (2) spaces for each bed.
Bicycle - Minimum of ten percent (10%) of the required vehicular parking with a minimum of two (2) spaces.



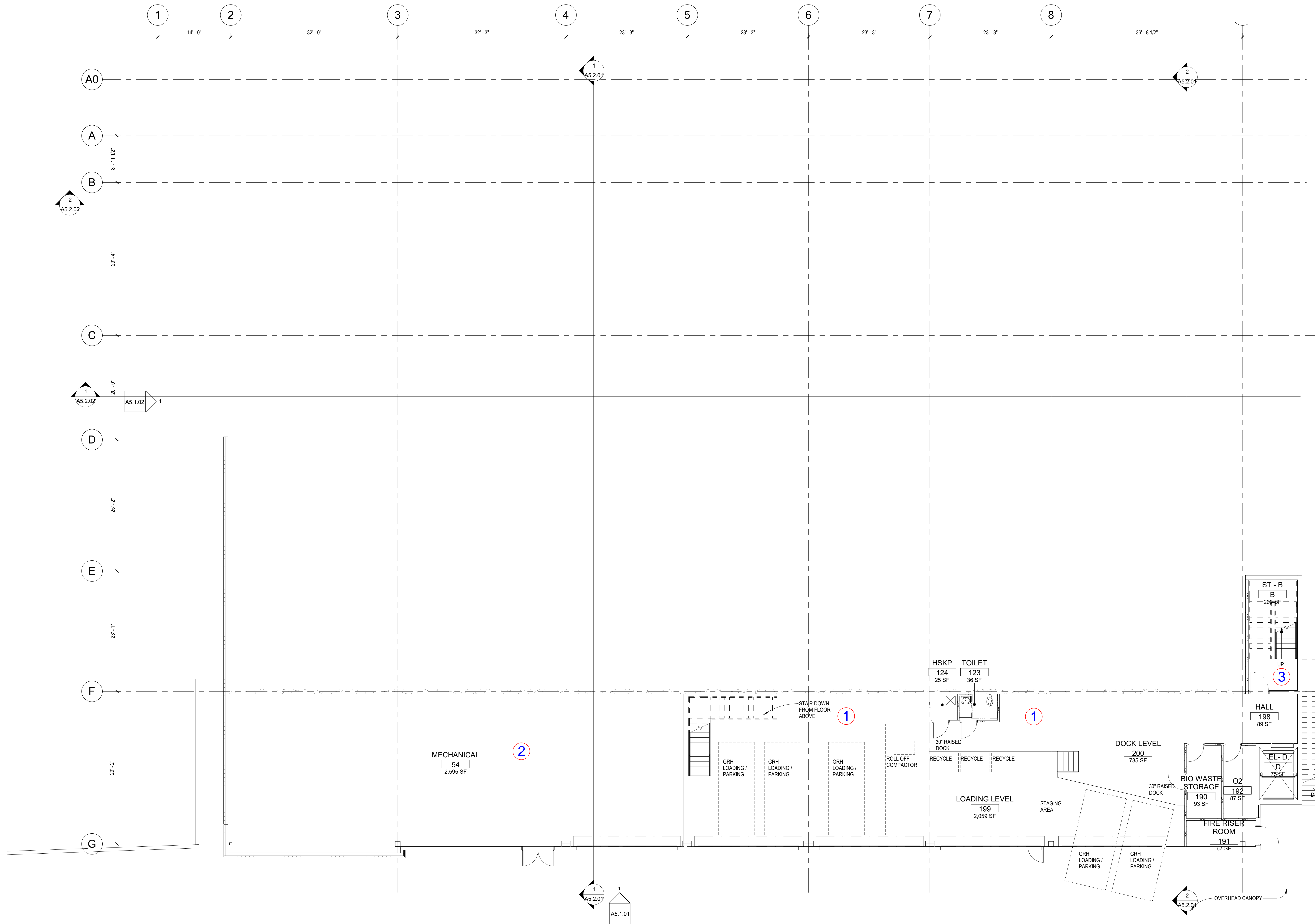
Medical or dental clinics and medical professional schools:

Vehicle - One (1) space for each doctor and each employee plus one (1) space for each 300 square feet of gross floor area.
Bicycle - Minimum of ten percent (10%) of the required vehicular parking with a minimum of two (2) spaces.



Offices not providing customer service on the premises:

Vehicle - One (1) space for each employee or one (1) space for each 400 square feet of gross floor area, whichever amount is greater.
Bicycle - Minimum of ten percent (10%) of the required vehicular parking with a minimum of two (2) spaces.



PARKING CALCULATION SUPPORT SERVICES

DESIGNATES SQUARE FOOT AREA OF MEDICAL SERVICES FOR PATIENTS AND EMPLOYEES

① LOADING DOCK AREA NOT OCCUPIED

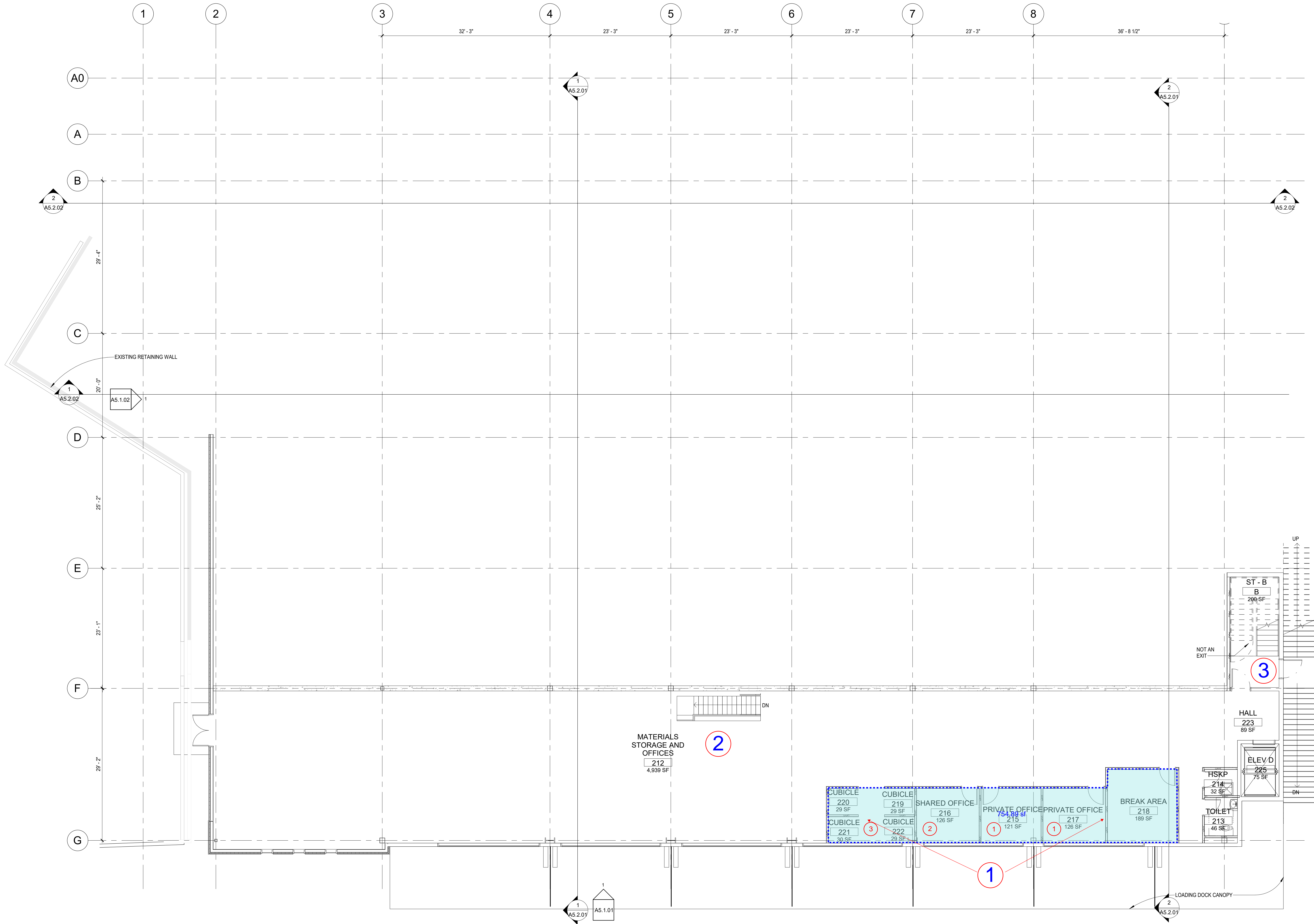
(EMPLOYEES ARE COUNTED ON FLOOR ABOVE)

② MECHANICAL & STORAGE = 0 SPACES

③ CORRIDORS AND STAIRS = 0 SPACES

TOTAL REQUIRED PARKING THIS FLOOR = 0 SPACES
BICYCLE PARKING REQUIRED: = 0

- Hospitals:
 - Vehicle** - Two (2) spaces for each bed.
 - Bicycle** - Minimum of ten percent (10%) of the required vehicular parking with a minimum of two (2) spaces.
- Medical or dental clinics and medical professional schools:
 - Vehicle** - One (1) space for each doctor and each employee plus one (1) space for each 300 square feet of gross floor area.
 - Bicycle** - Minimum of ten percent (10%) of the required vehicular parking with a minimum of two (2) spaces.
- Offices not providing customer service on the premises:
 - Vehicle** - One (1) space for each employee or one (1) space for each 400 square feet of gross floor area, whichever amount is greater.
 - Bicycle** - Minimum of ten percent (10%) of the required vehicular parking with a minimum of two (2) spaces.



PARKING CALCULATION SUPPORT SERVICES

③ DESIGNATES NUMBER OF AVERAGE DAILY FULL TIME EMPLOYEES PER WORK AREA

① DESIGNATES SQUARE FOOT AREA OF MEDICAL SERVICES FOR PATIENTS AND EMPLOYEES

① 755 SF MATERIALS MGMT. STAFF OFFICES/ BREAK RM @ 1/400 SF = 2 SPACES (CALCULATION NOT USED)

OR GREATER OF

7 DEDICATED EMPLOYEES = 7 SPACES

② MATERIALS STORAGE = 0 SPACES

③ CORRIDORS AND STAIRS = 0 SPACES

TOTAL REQUIRED PARKING THIS FLOOR = 7 SPACES

BICYCLE PARKING REQUIRED: = 1

Hospitals:

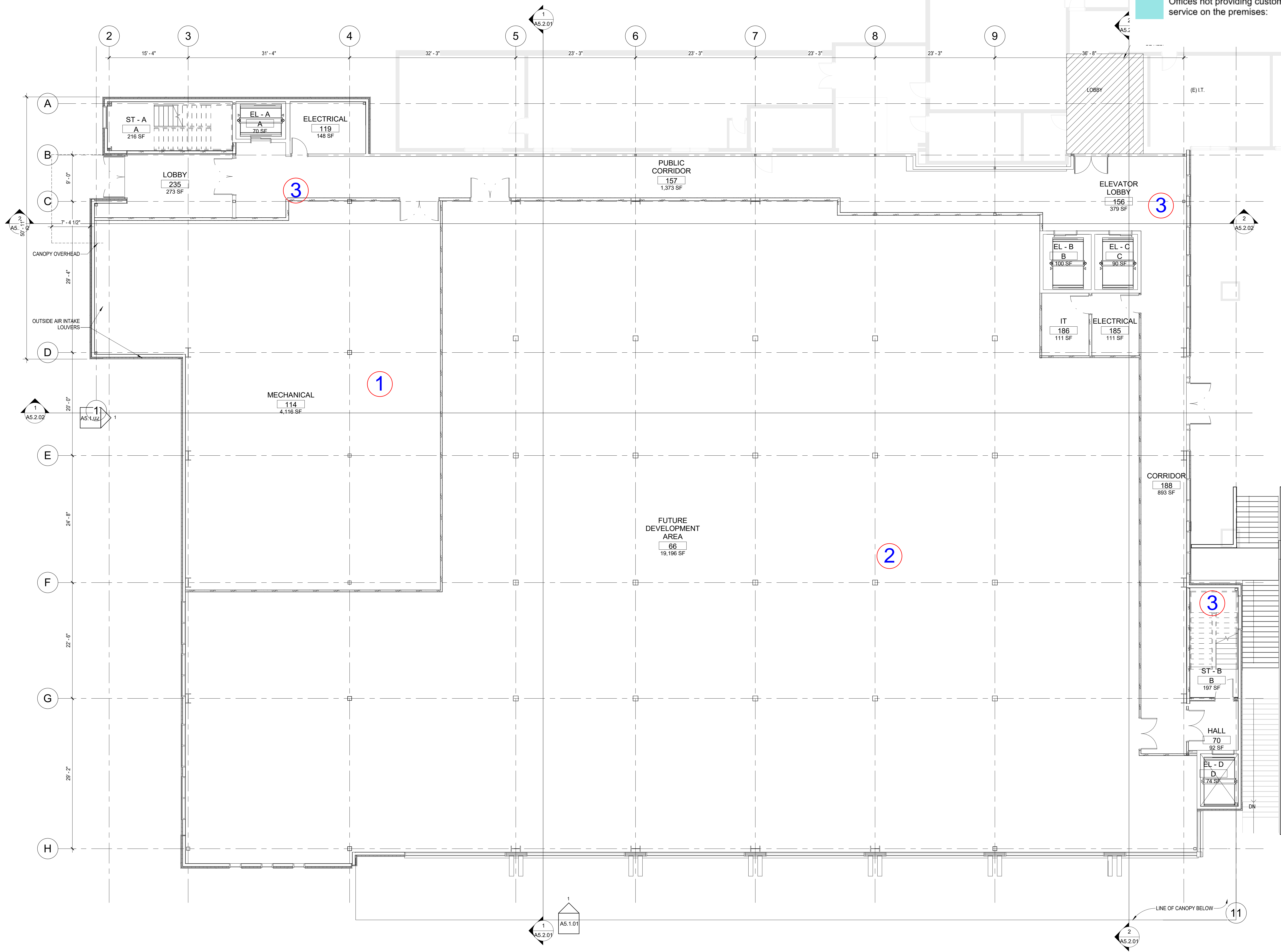
Medical or dental clinics and medical professional schools:

Offices not providing customer service on the premises:

Vehicle - Two (2) spaces for each bed.
Bicycle - Minimum of ten percent (10%) of the required vehicular parking with a minimum of two (2) spaces.

Vehicle - One (1) space for each doctor and each employee plus one (1) space for each 300 square feet of gross floor area.
Bicycle - Minimum of ten percent (10%) of the required vehicular parking with a minimum of two (2) spaces.

Vehicle - One (1) space for each employee or one (1) space for each 400 square feet of gross floor area, whichever amount is greater.
Bicycle - Minimum of ten percent (10%) of the required vehicular parking with a minimum of two (2) spaces.



PARKING CALCULATION LL1 FUTURE BUILDOUT

AREAS ON THIS FLOOR PLAN ARE BASED ON OCCUPANCIES FOR CURRENT PLANNED CONSTRUCTION. FUTURE PROPOSED ADJUSTMENTS TO OCCUPANCY CATEGORIES AND ASSOCIATED PARKING REQUIREMENTS WILL BE SUBMITTED AS SEPARATE DOCUMENTS

- ① MECHANICAL ROOM:
(UNOCCUPIED) = 0 SPACES
- ② STAFF TRAINING/
CONFERENCE STORAGE/SPACE
= 0 SPACES
- ③ CORRIDORS AND STAIRS
= 0 SPACES

**TOTAL
REQUIRED PARKING THIS FLOOR
= 0 SPACES**
 BICYCLE PARKING REQUIRED: = 0

Hospitals:

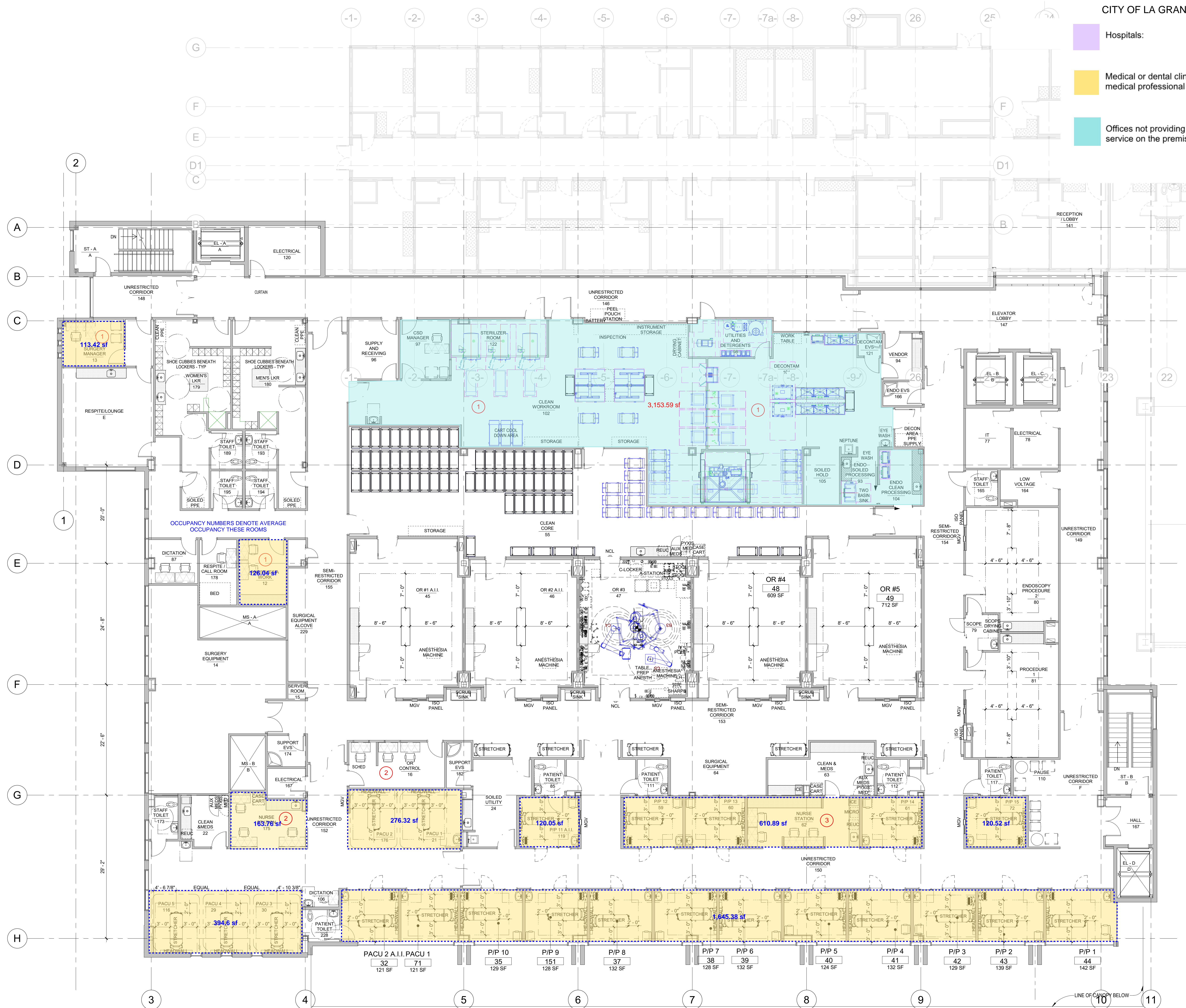
Medical or dental clinics and medical professional schools:

Offices not providing customer service on the premises:

Vehicle - Two (2) spaces for each bed.
Bicycle - Minimum of ten percent (10%) of the required vehicular parking with a minimum of two (2) spaces.

Vehicle - One (1) space for each doctor and each employee plus one (1) space for each 300 square feet of gross floor area.
Bicycle - Minimum of ten percent (10%) of the required vehicular parking with a minimum of two (2) spaces.

Vehicle - One (1) space for each employee or one (1) space for each 400 square feet of gross floor area, whichever amount is greater.
Bicycle - Minimum of ten percent (10%) of the required vehicular parking with a minimum of two (2) spaces.



PARKING CALCULATION MEDICAL SERVICES

- ③ DESIGNATES NUMBER OF AVERAGE DAILY FULL TIME EMPLOYEES PER WORK AREA
- DESIGNATES SQUARE FOOT AREA OF MEDICAL SERVICES FOR PATIENTS AND EMPLOYEES

3530 SF MEDICAL TREATMENT SPACE: /1: 300 SF = 12 SPACES

11 DEDICATED EMPLOYEES = 11 SPACES

CORRIDORS AND STAIRS = 0 SPACES

TOTAL REQUIRED PARKING THIS FLOOR = 23 SPACES

BICYCLE PARKING REQUIRED: = 3



Hospitals:

Vehicle - Two (2) spaces for each bed.

Bicycle - Minimum of ten percent (10%) of the required vehicular parking with a minimum of two (2) spaces.



Medical or dental clinics and medical professional schools:

Vehicle - One (1) space for each doctor and each employee plus one (1) space for each 300 square feet of gross floor area.

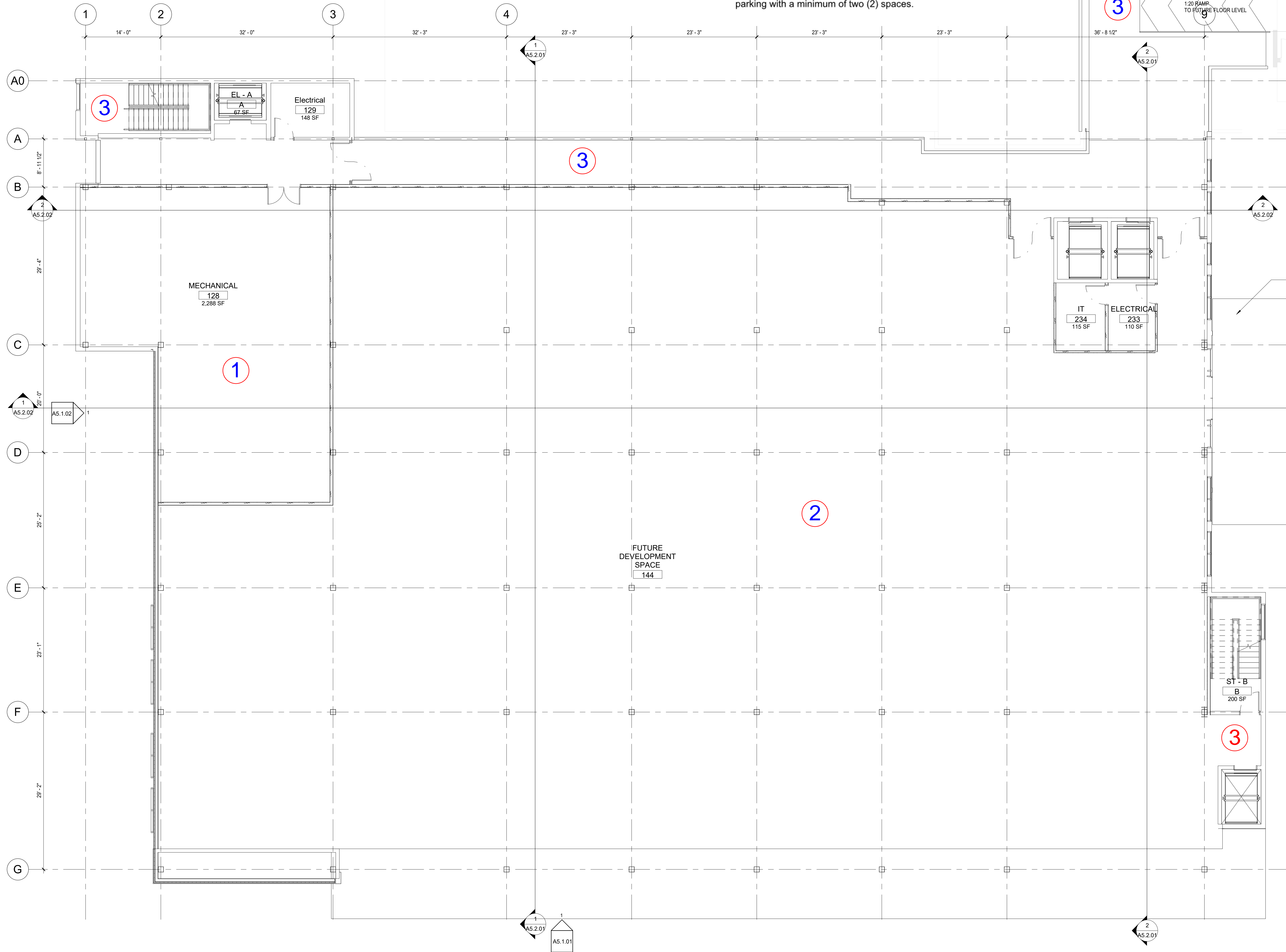
Bicycle - Minimum of ten percent (10%) of the required vehicular parking with a minimum of two (2) spaces.



Offices not providing customer service on the premises:

Vehicle - One (1) space for each employee or one (1) space for each 400 square feet of gross floor area, whichever amount is greater.

Bicycle - Minimum of ten percent (10%) of the required vehicular parking with a minimum of two (2) spaces.



PARKING CALCULATION L2 FUTURE BUILDOUT

AREAS ON THIS PLAN DESIGNATE SPACE USES AND OCCUPANCIES FOR CURENT PLANNED CONSTRUCTION. FUTURE PROPOSED ADJUSTMENTS TO OCCUPANCY CATEGORIES AND ASSOCIATED PARKING REQUIREMENTS WILL BE SUBMITTED AS SEPARATE DOCUMENTS

- ① MECHANICAL ROOM:
(UNOCCUPIED) = 0 SPACES
- ② FUTURE STAFF CONFERENCE/
TRAINING SPACES = 0 SPACES
- ③ CORRIDORS AND STAIRS
= 0 SPACES

**TOTAL
REQUIRED PARKING THIS FLOOR
= 0 SPACES**

BICYCLE PARKING REQUIRED: = 0