

# CITY of LA GRANDE

## Joint Work Session City Council; Planning Commission; and Parks and Recreation Advisory Commission

Monday, March 28, 2022

6:00 p.m.

Council Chambers  
La Grande City Hall  
1000 Adams Avenue  
La Grande, Oregon

You can view the Work Session on Facebook Live at the following link:  
[www.facebook.com/CityofLaGrande](http://www.facebook.com/CityofLaGrande)

## AGENDA

*The purpose of a Work Session is to provide an opportunity to informally discuss topics of common concern and interest and to exchange ideas with Staff, not to make decisions or to direct Staff toward a specific action or conclusion beyond identifying additional information the Council and/or Planning Commission would like to have presented at a later date. As no decisions are made, there will be no voting at the Work Session. The City Manager or members of the Staff may confirm any additional information required as part of any future discussions regarding the presented topic(s). If a Work Session topic subsequently requires official action, it will become an action (voting) item on a following Regular Session Agenda. In accordance with the Oregon Public Meetings Law, Council Work Sessions are open to the public; however, in order to make efficient use of time, public comments and questions generally are not entertained during the discussion segment of the Work Session. **Time will not be designated for public comments at the conclusion of the discussion.** Members of the public are routinely provided with an opportunity to address the Mayor and Council during the Public Comments portion of each Regular Session Agenda.*

1. **CALL to ORDER** 6:00 p.m.  
~ Stephen E. Clements, Mayor
2. **PARKS MASTER PLAN**  
~Stu Spence, Parks and Recreation Department Director  
~David Moyal, Chair, Parks and Recreation Advisory Commission
3. **ADJOURN** 7:30 p.m.

---

Sandra Patterson  
City Recorder

*Persons requiring special accommodations who wish to participate in the Work Session are encouraged to make arrangements prior to the meeting by calling 541-962-1309. The City of La Grande does not discriminate against individuals with disabilities*



---

**Administrative Offices · 2402 Cedar Street · La Grande, Oregon 97850 · PHONE (541) 962-1352**

**TO:** Mayor and City Council  
Planning Commission

**FROM:** Stu Spence, Parks & Recreation Director

**SUBJECT:** Parks Master Plan Joint Work Session, March 28, 2022

**DATE:** March 21, 2022

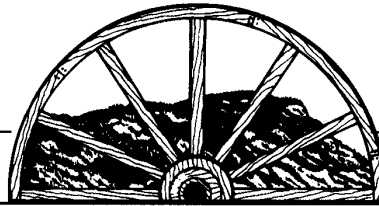
---

The Parks & Recreation Advisory Commission started working on the Parks Master Planning process in 2020. The La Grande Parks and Recreation Master Plan is intended to help meet the needs of current and future residents by positioning La Grande to build on the community's unique parks and recreation assets and identify new opportunities. There was good participation in the citizen-driven plan that establishes a clear direction to guide City staff, advisory committees, and elected officials in their efforts to enhance our community's parks system, open space, community forest, trails, recreation facilities, programs and services. The purpose of this plan is to continue to evaluate and develop a well-planned systemic approach to managing community parks and recreation needs. The Master Plan ensures that these services are consistent, compatible, and complimentary to all current and planned Parks and Recreation services.

A variety of public forums were held along with discussion from the Community Landscape & Forestry and Parks & Recreation Advisory Commissions.

They both recommend approval in this process so we can move on to the next steps illustrated by the Community Development / Planning Department.

The DRAFT plan that will be discussing is a culmination of all these efforts.



## PARKS MASTER PLAN

### Schedule of Procedural and Public Hearing Requirements

In accordance with Land Development Code Ordinance 3252, Series 2021, Articles 9.3 and 9.4, Comprehensive Plan Amendments are subject to the City Council's review and decision authority, upon receiving a recommendation from the Planning Commission. In accordance with Article 9.5, public hearings for the consideration of the proposal were scheduled as follows:

Summer 2021.....	Circulation of On-line and Paper Survey to Community.
October 19, 2021.....	Focus Group Meeting – Outdoor Recreation Facilities
October 20, 2021.....	Focus Group Meeting – Indoor Recreation Facilities
October 21, 2021.....	Focus Group Meeting – Programs and Events
November 2, 2021.....	Focus Group Meeting – Top 3 Concerns to Address in Plan
November 4, 2021.....	Focus Group Meeting – Park Locations and Maintenance Needs
February 3, 2022.....	Public Input Meeting via Zoom Videoconference
<b>March 28, 2022.....</b>	<b>Joint Work Session, before the Parks Commission, Planning Commission and City Council</b>
April 1, 2022.....	35-Day Required Notice to the DLCD (or greater)
April 6, 2022.....	Public Notice Mailed to all Property Owners (City and UGB)
May 10, 2022.....	Public Hearing #1, before the Planning Commission
June 1, 2022.....	Public Hearing #2, before the City Council, and First Reading of the adopting Ordinance by Title Only.
July 6, 2022.....	Public Hearing #3, before the City Council, and Second Reading of the adopting Ordinance by Title Only.
July 12, 2022.....	Application for Co-Adoption Submitted to Union County.
August 5, 2022.....	30-Day Appeal Period and DLCD Notice - Post Acknowledgement Plan Amendment (PAPA) – for inside the City Limits only.
September, 2022.....	Public Hearing #4, before the Union County Planning Commission for Co-Adoption – for Urban Growth Boundary Areas.
November, 2022.....	Public Hearing #5, before the Union County Board of Commissioners, and First Reading of the adopting Ordinance by Title Only.
December, 2022.....	Public Hearing #6, before the Union County Board of Commissioners, and Second Reading of the adopting Ordinance by Title Only.
January, 2023.....	DLCD Notice - Post Acknowledgement Plan Amendment (PAPA) – for Urban Growth Boundary Areas.

# Parks & Recreation Master Plan



2022 - 2027

## Purpose of this Plan

The La Grande Parks and Recreation Master Plan is intended to help meet the needs of current and future residents by positioning La Grande to build on the community's unique parks and recreation assets and identify new opportunities. The citizen-driven plan establishes a clear direction to guide city staff, advisory committees, and elected officials in their efforts to enhance the community's parks system, open space, community forest, trails, recreation facilities, programs and services. The purpose of this plan is to continue to evaluate and develop a well-planned systemic approach to managing community parks and recreation needs. The Master Plan ensures that these services are consistent, compatible, and complimentary to all current and planned Parks and Recreation services.

## Department Description

The La Grande Parks & Recreation Department consists of four different divisions including; 1) Aquatics (Veterans' Memorial Pool), 2) Recreation, 3) Parks Maintenance, and 4) Urban Forestry. The department receives funding authorized by the City Council through budget appropriations. Additional funding is provided through fees charged for specific programs and services and through grant funds. Through these means, parks and recreation programs and services are provided and maintained for the citizens of La Grande.



## Methodology of this Planning Process

This project has been guided by a project team, made up of City Staff and the Parks & Recreation Advisory Commission. This project consisted of the following tasks.

### ***Needs Assessment, Public Involvement, and Process -***

## Community Survey

Online and paper surveys were made available to all residents and we received 491 responses. This data was analyzed and refined by respondent residency. 411 responses were from La Grande residents, 25 were missing a city name, and 55 were from outside of La Grande. Only responses from City of La Grande residents were considered in developing the plan and priorities.

## Focus Groups

Five online videoconference focus groups were held in fall of 2021 with five discussion points:

1. Outdoor Recreation Facilities – What are the priorities for future facilities?
2. Indoor Recreation Facilities - What are the priorities for future facilities?
3. Programs and events – What are we missing, what should we add?
4. Top 3 concerns for the master plan to address.
5. Park location needs and parks maintenance requirements.



Focus Group results themes included:

- Connectivity of parks between parks. Ideas included creating natural or street corridors where citizens could safely walk or bike between City parks
- Accessibility for the disabled and for different socioeconomic groups
- Increased youth/teen programs and/or spaces. This included a need for a multi-use, year-round facility with a focus on youth programming

**Discussion from  
December 15,  
2021 focused  
on:**

**Indoor Facilities**

*- Recreation Center emerged as a priority including youth/teen space.*

**Outdoor Facilities**

*- Priorities set beginning with Riverside Playground replacement.*

**Programs and Events**

*- New focus on youth/teen programming.*

**Neighborhood Park Locations**

*- Eastern part of La Grande was identified as a priority.*

- More trails throughout town
- Preserve and grow natural areas within the parks system

The Parks & Recreation Advisory Commission met on December 15, 2021, to determine common themes and prioritize projects and improvements for the next five years. Members participating included: David Moyal, Chairperson Bob Mills, Vice Chairperson Steve Antell, and John Briney. Staff present were McKayla Rollins, Aquatic & Recreation Superintendent and Stu Spence, Parks & Recreation Director. The discussion focused on the following topics:

**Indoor Facilities**

- The surveys showed overwhelming support and demand for year-round youth and teen programs. If we are looking to the future, the biggest capital investment should in a Recreation Center with gym space, classrooms, and multi-purpose space with a focus on youth programming. The emphasis on youth and teen programming will likely tie into all the indoor facilities. We could look in to developing a “Friends Group” that could be a non-profit partner to support this capital campaign.
  - Explore connecting a Recreation Center to the pool. This would create a better customer experience and could include the construction of a gym, classrooms, multi-purpose space, and new locker rooms at entry. Some ballfields would have to be relocated and parking addressed.
- Riviera School was discussed as an option, but was determined the building did not have sufficient usable space.
  - It could work if the gym was saved, but the rest of the building would need to demolished and new space added.
  - Multipurpose space is really important.

**Outdoor Facilities**

- Riverside Playground
- Splash Pad
- Install restrooms at Candy Cane and Benton Parks
- Install shade canopies at Sunnyhill, Candy Cane, and Benton Parks
- Replace playground at Sunnyhill Park
- Trail and Connectivity Opportunities
  - Park to park along street corridors
  - La Grande to Island City Greenway Trail
  - Deal Canyon to Morgan Lake
  - Riverside Park to Fairgrounds
  - Birnie Park to EOU
- Natural Area Expansion Opportunities
  - Pete’s Pond and/or Gangloff Park

**Parks & Recreation  
Advisory Commission  
Recommendations  
and Themes cont'd**

**Discussion from  
December 15,  
2021 focused  
on:**

**Indoor Facilities**

*- Recreation  
Center emerged  
as a priority  
including  
youth/teen  
space.*

**Outdoor  
Facilities**

*- Priorities set  
beginning with  
Riverside  
Playground  
replacement.*

**Programs and  
Events**

*- New focus on  
youth/teen  
programming.*

**Neighborhood  
Park Locations**

*- Eastern part of  
La Grande was  
identified as a  
priority.*

**Programs/Events Suggestions**

- Morgan Lake Outdoor Education and boating
- Teen recreational sports leagues
- Community Hikes
- Partnering with the Library to create a teen hang out
- Diving, Jr. Lifeguard program, Teen pool programs
- Ski Bus or other trip opportunities throughout the year

**Neighborhood Park Locations**

- Stu will work with City Hall to create map with parks and distances and to help identify neighborhoods that need parks
- Eastern La Grande neighborhood is lacking in park land
  - We might be able to partner with the School District to improve their facilities for that use in that neighborhood that doesn't have a park
  - OTECC might be another partner in that neighborhood



Morgan Lake in the Fall

## Goal 1: Maximize Planning Effort

**Strategy:** Incorporate the action items of this plan into the City's annual work plans to achieve the goals identified in this plan and to enhance effectiveness of staff effort.

**Actions:**

- Involve and inform City Council at their annual retreat of the relevant elements of this plan.
- Incorporate the actions identified in this plan into the development of the Department's Requested Budget during the City's Budget process.

**Strategy:** Assure that all levels of staff are informed of and are set up to work together to implement this plan.

**Actions:**

- Inform all levels of staff of the direction of the plan, allow for staff input, encourage buy-in.
- Provide cross-departmental staff teams as appropriate under this plan.

## Goal 2: Strategically Increase Programming and Partnerships

**Strategy:** Develop a standard practice for customer program feedback.

**Actions:**

- Develop a standard survey (usually at the end of a program) that will help improve programming and be able to respond to customer needs in a timely matter. Give customers an opportunity to provide positive and negative feedback.
- Develop a structured plan for soliciting and implementing suggestions for improving programs by staff.
- Annual community outreach on how to improve or what programs to add.
- Annual specific organizational (service clubs and volunteer organizations) outreach

**Strategy:** Implement and/or modify programs based on research and feedback.

**Actions:**

- Track new trends that may drive new needs.
- Budget for new and/or expanded programming.
- Adequately market new and/or expanded programs.

**Strategy:** Improve and enhance community partnerships that support the Urban Forestry program.

**Actions:**

- Improve communications and relationships with OTECC.
- Increase programming and outreach in local schools.

**Strategy:** Preserve and enhance community forest.

**Actions:**

- Enhance enforcement language to protect established trees and tree planting requirements during new development.
- Maintain partnership with Public Works for street tree clearance pruning by zone.
- Develop a marketing campaign for right-of-way planting, pruning, and removing trees.



DRAFT

### Goal 3: Provide Equitable Level of Service in Existing Parks and Facilities Throughout the Community

**Strategy:** Improve existing parks to meet community needs.

**Actions:**

- Strive to replace, add, or renovate amenities in the order listed below.
  - Riverside Playground
  - Splash Pad
  - Restrooms at Candy Cane and Benton Parks
  - Shade canopies at Sunnyhill, Candy Cane, and Benton Parks
  - Sunnyhill Park Playground

**Strategy:** Improve accessibility and connectivity.

**Actions:**

- Strive to provide parks, greenways, or indoor facilities within one third mile of City residents to ensure continued walkability.
- Work with other City departments that received Community Pathways funding to coordinate our planning efforts.
- Create a walkability analysis map by partnering with other City departments.
- Establish a task force to create a trail and pathway inventory consisting of current and potential future bike/ped friendly public/private natural or street corridors throughout La Grande and into adjacent land connecting other natural areas in the County.
- Use the walkability analysis to create priorities for connections to parks, greenways, or indoor facilities.
- Work with other City departments to create natural or street corridors where citizens could safely walk or bike between City parks.
- Look for trail and pathway opportunities in parks and throughout town.
- Ensure park amenities are accessible to all.
- Intentionally look to identify and add park property on the East side of La Grande.

**Strategy:** Increase community forestry equity.

**Actions:**

- Identify low income, high need areas for tree plantings.
- Organize neighbors in low income, high need areas to advocate for the community forest.
- Plant at least 50 trees along Island Avenue northeast of Interstate 84.
- Work with other City departments on developing sidewalks, curbs, and planting strips in these underserved neighborhoods.

### Goal 4: Create increased youth/teen programs and/or spaces.

**Strategy:** Identify and develop Recreation Center facility.

**Actions:**

- Identify and engage key community partners including EOU and La Grande School District, contractors, business owners, and foundations.
- Explore a “friends” group non-profit that could support fundraising efforts for the Recreation Center.

- Ensure there is multi-purpose community space for teen and senior programming, sports, events, activities, classes, meetings, and more.
- Work with an engineer/architecture to conduct a site analysis and develop plans.

**Strategy:** Develop youth/teen programming slate of activities throughout the year.

**Actions:**

- Ensure specific youth/teen programs are offered and advertised each quarter.
- Utilize Morgan Lake and other outdoor amenities to offer outdoor education for youth.
- Develop teen recreational sports leagues.
- Explore partnerships with the Library, EOU, and/or other partners to create a teen hang out space and programs.
- Develop teen aquatics programming. i.e. Jr. Lifeguard program, evening events.
- Develop youth/teen trips. i.e. ski bus, Boise, Pendleton.

**Goal 5: Preserve and grow natural areas within the parks system.**

**Strategy:** Preserve Gangloff Park as a natural area.

**Actions:**

- Continue to work with the Native Plant Society and provide budget support for their volunteer projects along with materials and supplies.
- Look for opportunities to purchase adjacent land.

**Strategy:** Look for opportunities to add natural areas to the park system inventory.

**Actions:**

- Meet with Blue Mountain Conservancy for potential partnership opportunity at Pete's Pond.
- Work with other City departments to identify possible natural area park acquisition opportunities.

Recommended 2022 – 2027 Funding Priorities	Cost Estimate	Potential Funding Sources
Riverside Park Playground Replacement	\$125,000	General Fund, Grants, Donations
Hire architect/engineer to provide site analysis for Recreation Center	\$25,000	General Fund, Park SDC Funds
Splash Pad Construction	\$100,000	General Fund, Grants, Donations
Restroom at Candy Cane Park	\$50,000	General Fund, Grants, Public Works
Restroom at Benton Park	\$50,000	General Fund, Grants, Public Works
Shade Canopy at Candy Cane Park	\$50,000	General Fund, Grants
Shade Canopy at Benton Park	\$50,000	General Fund, Grants
Sunny Hills Park Playground Replacement	\$40,000	General Fund, Grants, Donations
Shade Canopy at Sunnyhill Park	\$50,000	General Fund, Grants

DRAFT

<b>Fiscal Year 1</b>	<b>Actions to accomplish during fiscal year 22-23</b>	<b>Who's responsible</b>
<b>CIP</b>	Hire architect/engineer to provide site analysis for Recreation Center	Director, PRAC Ad Hoc Committee
<b>Goal 1: Maximize Planning Effort</b>	Involve and inform City Council at their annual retreat of the relevant elements of this plan.	Director, Superintendent
<b>Goal 1</b>	Inform all levels of staff of the direction of the plan, allow for staff input, encourage buy-in.	All Staff
<b>Goal 1</b>	Provide cross-departmental staff teams as appropriate under this plan.	All Staff
<b>Goal 2</b>	Develop a standard survey (usually at the end of a program) that will help improve programming and be able to respond to customer needs in a timely matter. Give customers an opportunity to provide positive and negative feedback.	Superintendent, Recreation Coordinator
<b>Goal 2</b>	Develop a marketing campaign for right-of-way planting, pruning, and removing trees.	Superintendent, Urban Forester
<b>Goal 2</b>	Develop a structured plan for soliciting and implementing suggestions for improving programs by staff.	Superintendent, Recreation Coordinator
<b>Goal 3: Provide Equitable Level of Service in Existing Parks and Facilities Throughout the Community</b>	Create a walkability analysis map by partnering with other City departments.	Director
<b>Goal 4: Create increased youth/teen programs and/or spaces.</b>	Identify and engage key community partners including EOU and La Grande School District, contractors, business owners, and foundations.	Director, Superintendent
<b>Goal 4</b>	Explore a "friends" group that could support fundraising efforts for the Recreation Center.	PRAC, Director
<b>Goal 4</b>	Develop teen aquatics programming. i.e. Jr. Lifeguard program, evening events.	Aquatics Activity Coordinator
<b>Goal 4</b>	Develop youth/teen trips. i.e. ski bus, Boise, Pendleton	Superintendent, Recreation Coordinator
<b>Goal 5</b>	Meet with Blue Mountain Conservancy for potential partnership opportunity at Pete's Pond.	Director
<b>Goal 5</b>	Work with other City departments to identify possible natural area park acquisition opportunities.	Director

<b>Fiscal Year 2</b>	<b>Actions to accomplish during fiscal year 23-24</b>	<b>Who's responsible</b>
<b>CIP</b>	Riverside Park Playground Replacement	Director, Parks Maintenance
<b>Goal 1: Maximize Planning Effort</b>	Incorporate the actions identified in this plan into the development of the Department's Requested Budget during the City's Budget process.	All Staff
<b>Goal 2: Strategically Increase Programming and Partnerships</b>	Annual community outreach on how to improve or what programs to add.	Superintendent, Recreation Coordinator
<b>Goal 3: Provide Equitable Level of Service in Existing Parks and Facilities Throughout the Community</b>	Establish a task force to create a trail and pathway inventory consisting of current and potential future bike/ped friendly public/private natural or street corridors throughout La Grande and into adjacent land connecting other natural areas in the County.	PRAC, Director
<b>Goal 3:</b>	Use the walkability analysis to create priorities for connections to parks, greenways, or indoor facilities.	PRAC, Director
<b>Goal 3</b>	Look for trail and pathway opportunities in parks and throughout town.	PRAC, Director
<b>Goal 3</b>	Identify low income, high need areas for tree plantings.	Director, Urban Forester
<b>Goal 4: Create increased youth/teen programs and/or spaces.</b>	Work with an engineer/architecture to conduct site analysis and develop plans.	Director
<b>Goal 4</b>	Utilize Morgan Lake and other outdoor amenities to offer outdoor education for youth.	Superintendent, Recreation Coordinator
<b>Goal 4</b>	Explore partnerships with the Library, EOU, and/or other partners to create a teen hang out space and programs.	Superintendent, Recreation Coordinator
<b>Goal 5: Preserve and grow natural areas within the parks system.</b>	Look for opportunities to purchase adjacent land near Gangloff Park.	Director

<b>Fiscal Year 3</b>	<b>Actions to accomplish during fiscal year 24-25</b>	<b>Who's responsible</b>
<b>Goal 2: Strategically Increase Programming and Partnerships</b>	Increase programming and outreach in local schools.	Urban Forester
<b>Goal 2</b>	Annual specific organizational (service clubs and volunteer organizations) outreach.	Director, Superintendent
<b>Goal 2</b>	Improve communications and relationships with OTECC.	Director, Urban Forester
<b>Goal 3</b>	Organize neighbors in low income, high need areas to advocate for the community forest.	Superintendent, Urban Forester
<b>Goal 4: Create increased youth/teen programs and/or spaces.</b>	Develop teen recreational sports leagues.	Recreation Coordinator

<b>Fiscal Year 4</b>	<b>Actions to accomplish during fiscal year 25-26</b>	<b>Who's responsible</b>
<b>CIP</b>	Splash Pad Construction	Director, Parks Maintenance
<b>Goal 2: Strategically Increase Programming and Partnerships</b>	Enhance enforcement language to protect established trees and tree planting requirements during new development.	Director, Urban Forester
<b>Goal 3: Provide Equitable Level of Service in Existing Parks and Facilities Throughout the Community</b>	Intentionally look to identify and add park property on the East side of La Grande.	Director

<b>Fiscal Year 5</b>	<b>Actions to accomplish during fiscal year 26-27</b>	<b>Who's responsible</b>
<b>CIP</b>	Restroom at Candy Cane Park	Director, Parks Maintenance
<b>Goal 3: Provide Equitable Level of Service in Existing Parks and Facilities Throughout the Community</b>	Work with other City departments to create natural or street corridors where citizens could safely walk or bike between City parks.	Director
<b>Goal 3</b>	Plant at least 50 trees along Island Avenue northeast of Interstate 84.	Urban Forester
<b>Goal 3</b>	Work with other City departments on developing sidewalks, curbs, and planting strips in these underserved neighborhoods.	Director

Additional Projects that exceed realistic funding goals for the 5-year plan.

Restroom at Benton Park	\$50,000	General Fund, Grants, Public Works
Shade Canopy at Candy Cane Park	\$50,000	General Fund, Grants
Shade Canopy at Benton Park	\$50,000	General Fund, Grants
Sunny Hills Park Playground Replacement	\$40,000	General Fund, Grants, Donations
Shade Canopy at Sunnyhill Park	\$50,000	General Fund, Grants



**The following pages are the results of the online and paper survey made available to all residents receiving 491 responses. This data was analyzed and refined by City residency. 411 responses were from La Grande, 25 were missing a city name, and 55 were from outside of La Grande. Consideration of priorities were given to La Grande residents.**

DRAFT

How Important are each of these to you?  
 Percentage reporting 'Very important'

	La Grande	Missing	Non-Resident	Overall
Riverside Park	86%	87.5%	88.9%	86.0%
Morgan Lake	78%	59.1%	71.2%	76.2%
Youth Sports	76%	82.6%	79.6%	76.4%
Playgrounds	74%	78.3%	74.5%	74.0%
Neighborhood Parks	72%	66.7%	63.0%	70.7%
Veterans' Memorial Pool	69%	60.9%	80.8%	69.9%
Pioneer Park	68%	70.8%	66.7%	68.3%
Youth Enrichment (i.e., afterschool programs, classes)	68%	73.9%	56.6%	67.2%
Urban Forest (trees near street and in parks)	68%	30.4%	53.7%	64.2%
Youth Summer Camps and Classes	65%	58.3%	54.5%	63.7%
Community Events (i.e., music in the park, summer parties)	62%	50.0%	57.4%	61.3%
Paved Recreational Trails	56%	33.3%	30.2%	52.4%
Athletic Fields	56%	70.8%	60.0%	57.5%
Downtown Greenspace	55%	39.1%	37.5%	52.2%
Designated Open Space	54%	36.4%	37.5%	51.1%
Picnic Areas	52%	39.1%	50.9%	51.1%
Urban Forestry Education (events around Arbor Day, school presentations, etc.)	45%	21.7%	29.1%	42.0%
Senior (55+) Programs (such as trips and excursions)	38%	37.5%	25.5%	36.7%
Adult Education Classes	34%	13.6%	29.6%	32.8%
Outdoor Basketball Courts	32%	29.2%	40.7%	33.2%
Skate Park	29%	25.0%	26.4%	28.1%
Adult Sports Leagues	27%	29.2%	27.5%	27.2%
Tennis Courts	21%	20.8%	20.0%	20.9%
Outdoor volleyball courts	19%	20.8%	19.2%	19.0%
Pickleball Courts	13%	19.0%	17.4%	13.5%

Please answer the following based on how you or someone in your household used these facilities before COVID.  
Percentage reporting 'Regularly basis seasonally' or 'Regularly basis throughout the year'

	La Grande
Riverside Park	70%
Playgrounds	61%
Neighborhood Parks	55%
Pioneer Park	53%
Morgan Lake	52%
Youth Sports	41%
Paved Recreational Trails	41%
Athletic Fields	36%
Veterans' Memorial Pool	34%
Community Events (e.g., music in the park)	30%
Picnic Areas	30%
Youth Summer Camps and Classes	19%
Outdoor basketball courts	15%
Youth Enrichment (e.g., afterschool programs)	14%
Adult Sports Leagues	11%
Skate Park	11%
Urban Forestry Education	8%
Outdoor volleyball courts	5%

We would like to know from your perspective how well the below facilities and events suit the community's needs.

Percentage reporting 'Exceptional' and 'Satisfactory'

	La Grande Satisfactory	Exceptional	COMBINED	Don't Know
Playgrounds	62%	36%	98%	7%
Pioneer Park Ballfields	49%	49%	98%	29%
Riverside Park (NOT Dog Park or Playground)	47%	49%	96%	3%
Neighborhood Parks	67%	29%	96%	6%
Picnic Areas	78%	18%	95%	11%
Riverside Park Dog Park	61%	34%	95%	39%
Other athletic Fields	66%	28%	93%	34%
Urban Forest (trees near street and in parks)	60%	32%	92%	14%
Youth Sports	62%	30%	92%	33%
Youth Summer Camps and Classes	63%	28%	90%	46%
Veterans' Memorial Pool	60%	30%	90%	10%
Skate Park	66%	22%	89%	48%
Morgan Lake	55%	33%	88%	8%
Urban Forestry Education	68%	18%	86%	61%
Youth Enrichment (i.e., afterschool programs and classes)	62%	24%	86%	52%
Community Events (i.e., music in the park, summer parties)	66%	18%	84%	23%
Adult Sports Leagues	69%	14%	82%	56%
Outdoor Basketball Courts	65%	18%	82%	44%
Designated Open Space	66%	15%	81%	32%
Outdoor volleyball courts	65%	12%	77%	54%
Adult Education Classes	61%	14%	76%	67%
Senior (55+) Programs (such as trips and excursions)	58%	17%	75%	72%
Paved Recreational Trails	59%	14%	73%	18%
Downtown Greenspace	58%	15%	72%	21%

What are your top three priorities for parks maintenance?

Percentage selected as a top 3 concern

La Grande

Restroom cleaning/maintenance	78%
Trash pickup and removal	59%
Amenities maintenance (i.e. playgrounds, picnic tables, etc.)	56%
Turf care (i.e. mowing, fertilizing, watering, etc.)	28%
Trail maintenance (i.e. snow removal, surface repair, etc.)	25%
Vegetation rehabilitation and care	17%
Ballfield maintenance	16%
Tree care (i.e. pruning, replacement, etc.)	11%
Other (please specify)	5%

**Other:**

All of it is important!

All of the above

available for all ages- including non-sports playing/watching seniors to be used in a wider variety of activities

Building for seniors to meet, play cards, dominoes, mahjong.

creating access to wild spaces: Gangloff Park, Mt. Emily winter access, Deal Canyon, Riverside walkway, and 12th street hiking trail

Develop Morgan lake to make it more user friendly

Difficult to say because everything was shut down for so long

Expansion of green and natural spaces

More trees planted to replace aging trees.

Need to spend more time supporting youth sports not adult beer drinking softball leagues

night swim hours at veterans pool (when covid threat is over)

Open spaces with native vegetation

Price for activities, we would go to the pool way more often and do camps if they were more affordable

Regular patrol to prevent misuse

Safety

Safety + speed of vehicles in parks

The parks and playgrounds have so many sketchy people and people speeding through them.

Tree care and veg management seem to be intertwined.

We need more playgrounds and with more things to do. Fix up old busted park toys. Riverside is falling apart. Wood coming undone. Screws out.

Would be nice to have a dirt track for BMX close to the skate park.

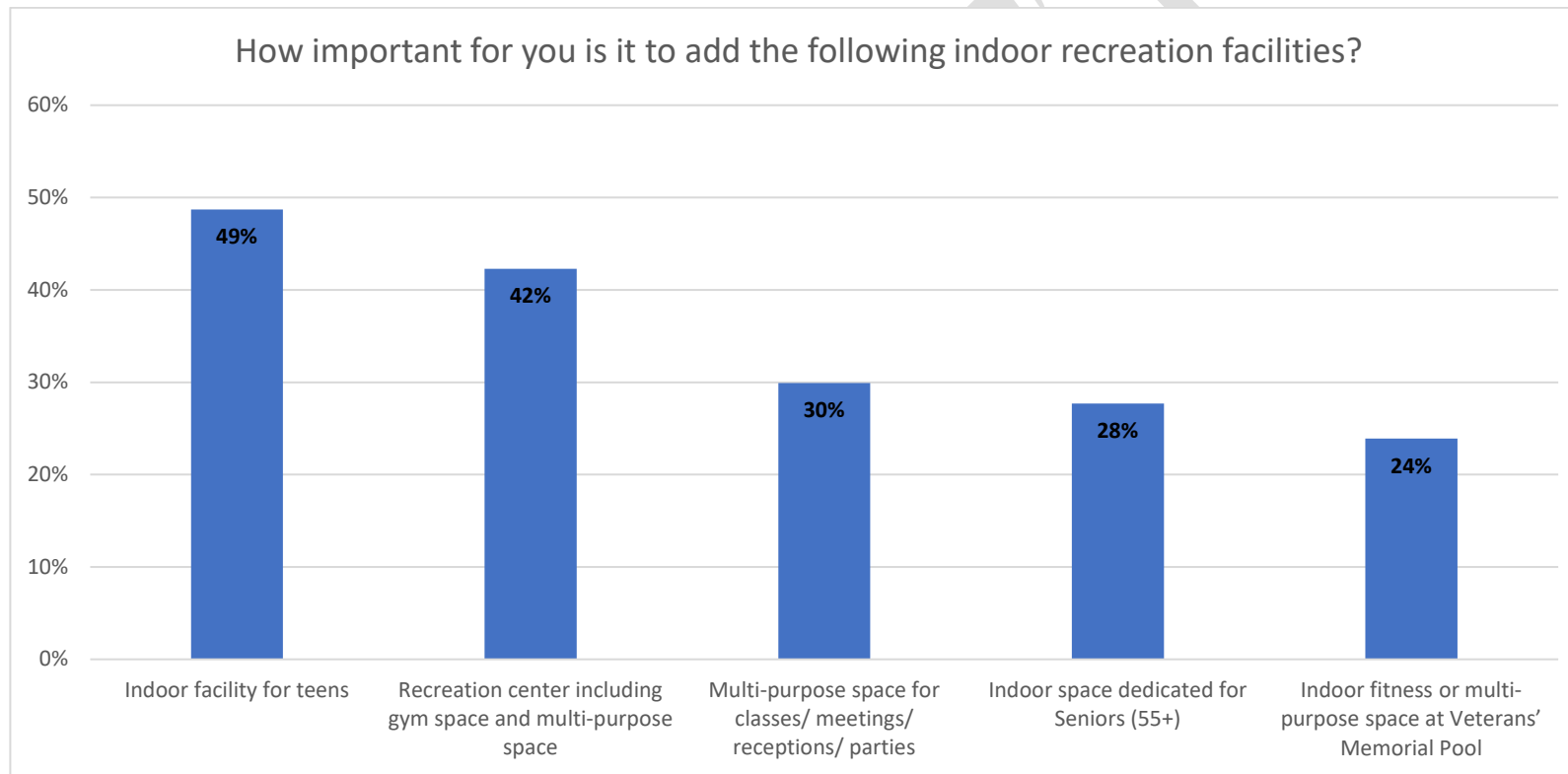
DRAFT

How important for you is it to add the following indoor recreation facilities?

Percentage reporting 'Very important'

La Grande

Indoor facility for teens	49%
Recreation center including gym space and multi-purpose space	42%
Multi-purpose space for classes/ meetings/ receptions/ parties	30%
Indoor space dedicated for Seniors (55+)	28%
Indoor fitness or multi-purpose space at Veterans' Memorial Pool	24%



## Indoor Recreation Facilities Comments

A Space for kids and teens is again important

Affordable is top priority. The Maridell center was great in theory but too expensive. Hopefully the bowling alley will be affordable.

After hours youth training seminars (mechanics, carpentry, forestry, EMT etc)

at no cost to seniors

Child care programs for all class of society (scholarships)

Disc Golf Course

Dual purpose emergency preparedness center and gym space at Riveria

Extending trail at Riverside park to Imbler

Gymnastics and dance is long overdue.

I'm new to this city, 68 yoa, and used to a place for seniors to meet for potluck lunches, game playing (ex. Cards, dominoes, mahjong, Rummikub.

Senior feel less alone when they have others to socialize with.

I'm not a senior & don't have any kids yet so some of these questions don't apply.

indoor soccer

indoor soccer space

Indoor sports in cold weather

Meet unmet needs in community

More stuff for seniors would be amazing especially vonsidering the lack of human connection due to covid

Outdoor pool or water park. Indoor children's museum or recreation space

Places for kiddos to play in bad weather!!

Seniors have a place and tons of options. There is nothing for our youth in this town other than drugs and breaking the law.

There needs to be fun safe free spaces for kids to go have fun be supervised.

Space able to be reserved for physical activities in privacy

splash pad and ice skating

The splash pad needs to be re-opened. There are only so many things parents can do with babies and toddlers and it has been unavailable to the public for 2 years now. I understand COVID19, but even before that it was closed. There needs to be several different splash pads built at 1 or 2 parks for the kids and community that doesn't require paying an excess amount of money for kids to find a way to beat the heat and have fun too.

Unsure on the seniors question. I do not know whether that age group feels they already have what they need or if they desire more.

We need a boys and girls club and Community Center

You need to concentrate on outdoor facilities.

Young Child spaces (esp. with marridell gone)



DRAFT

How important for you is it to add outdoor recreation facilities?  
Percentage reporting 'Very important to me'

	La Grande
Interactive water feature/ play fountain / splash pad	50%
Designated Open Space or Natural Areas	46%
Paved Recreational Trails	46%
Unpaved Recreational Trails	46%
Neighborhood Parks	43%
Outdoor Event Facility / Community Gathering Space	43%
Open Grassy Play Areas	42%
Playgrounds	37%
Downtown Greenspace	34%
Picnic Areas	33%
Pump track (bicycle track)	33%
Outdoor swimming pool	32%
Athletic Fields	31%
Picnic Shelters	30%
Dog Parks	24%
Artificial Turf Football/Soccer Fields	18%
Artificial Turf Softball / Baseball Fields	17%
Outdoor Volleyball Courts	10%
Tennis Courts	9%
Pickleball Courts	8%

### **Outdoor Recreation Facilities Comments:**

Bathroom at Candy Cane park. Very Important. Every park should have a bathroom, especially ones with playgrounds.

Buy the property next to Gangloff Park  
community garden

Disc Golf

Disc Golf Course

Extending Riverside Park trail to Imbler

Gymnastics /tumbling

I swim at Vet's memorial pool, run & bring my dogs to the park primarily.

Ice skating

Important to design parks or open spaces that do not attract homeless gathering. Max square is a prime example.

It would be nice if La Grande could compete with Pendleton's aquatic center and Joseph's splash pad in the summer. It used to be cheaper to drive all the way to Pendleton to swim not sure now, and free to play at the splash pad in Joseph. In addition if Pendleton and Enterprise can keep an ice skating rink open why can't we? We should be the main hub for this area.

Maintain and take care of what you have before adding anything.

Many of these would need policed

Maximize use of existing areas and facilities

Most important: maintain current facilities including parks and trails

nighttime hours at indoor facilities

Outdoor performance space

Park community food gardens

Promote Gangloff Park, make a walking trail along the GR river(west and east)

Roller skating

Trail to Morgan Lake, possibly up Deal Canyon, Develop riverfront park (see Boise Whitewater Park), Improve beachfront at Morgan Lake,

Work with Island City to develop quarry ponds into parks

Upgrade pool entry/locker rooms

Upkeep what we have instead of adding more.

would like to see a Peace Park with a peace pole and other user-friendly areas that is not associated with sports, and without religious or political association

What are your top 3 concerns to address with this Master Plan Update?

Percentage selected as a top 3 concern

La Grande

Improve or expand trail system	51%
Improve condition/maintenance of existing parks	39%
Increase number of youth programs	38%
Improve condition of existing facilities	32%
Increase number of indoor recreation facilities	32%
Plan ahead for growth	24%
Increase communication for services and programs	21%
Improve funding	17%
Increase number of parks and athletic fields	16%
Improve accessibility	9%
Other (please specify)	8%
Improve tree care, planting, and maintenance	8%

DRAFT

How would you rate the quality of customer service provided by the Parks and Recreation staff?

		Frequency	Percent	Valid Percent	Cumulative Percent
Valid	Poor	6	1.5	2%	2.0
	Could use improvement	46	11.2	15%	17.2
	Satisfactory	149	36.3	49%	66.3
	Exceptional	102	24.8	34%	100.0
	Total	303	73.7	100.0	
Missing	Don't Know	107	26.0		
	System	1	.2		
	Total	108	26.3		
Total		411	100.0		



Where do you get your information about Parks & Recreation programs?

Percentage selected for information source

	La Grande	La Grande Non-social media
Social Media	60%	
Friends	42%	45%
Website	39%	48%
Email	28%	34%
Local newspaper	24%	28%
Activity guide	17%	18%
Local radio stations	14%	8%
Flyers	11%	8%
Other (please specify)	4%	6%

Communication of information needs improved. Don't hear any information.

Community and Work meetings

First hand experience as coach

I didn't know where to find it

Library

library, some stuff it would be a good idea to use it's fb page more.

Park and Rec employees

School

School resources

Schools

This is my first time

What's the best way for you to receive Parks & Recreation information?

Percentage selected for information source

	La Grande	La Grande Non-social media
Social Media	69%	
Email	57%	69%
Website	45%	51%
Activity guide	28%	33%
Friends	26%	22%
Local newspaper	24%	27%
Local radio stations	20%	12%
Flyers	17%	16%
Other (please specify)	3%	5%

a text saying a new activity guide pdf is available would be helpful

K-12 schools, GRH women's and children's clinic

Mail

Schools

Social media is the fastest

Text messages

Anything as long as it's consistent

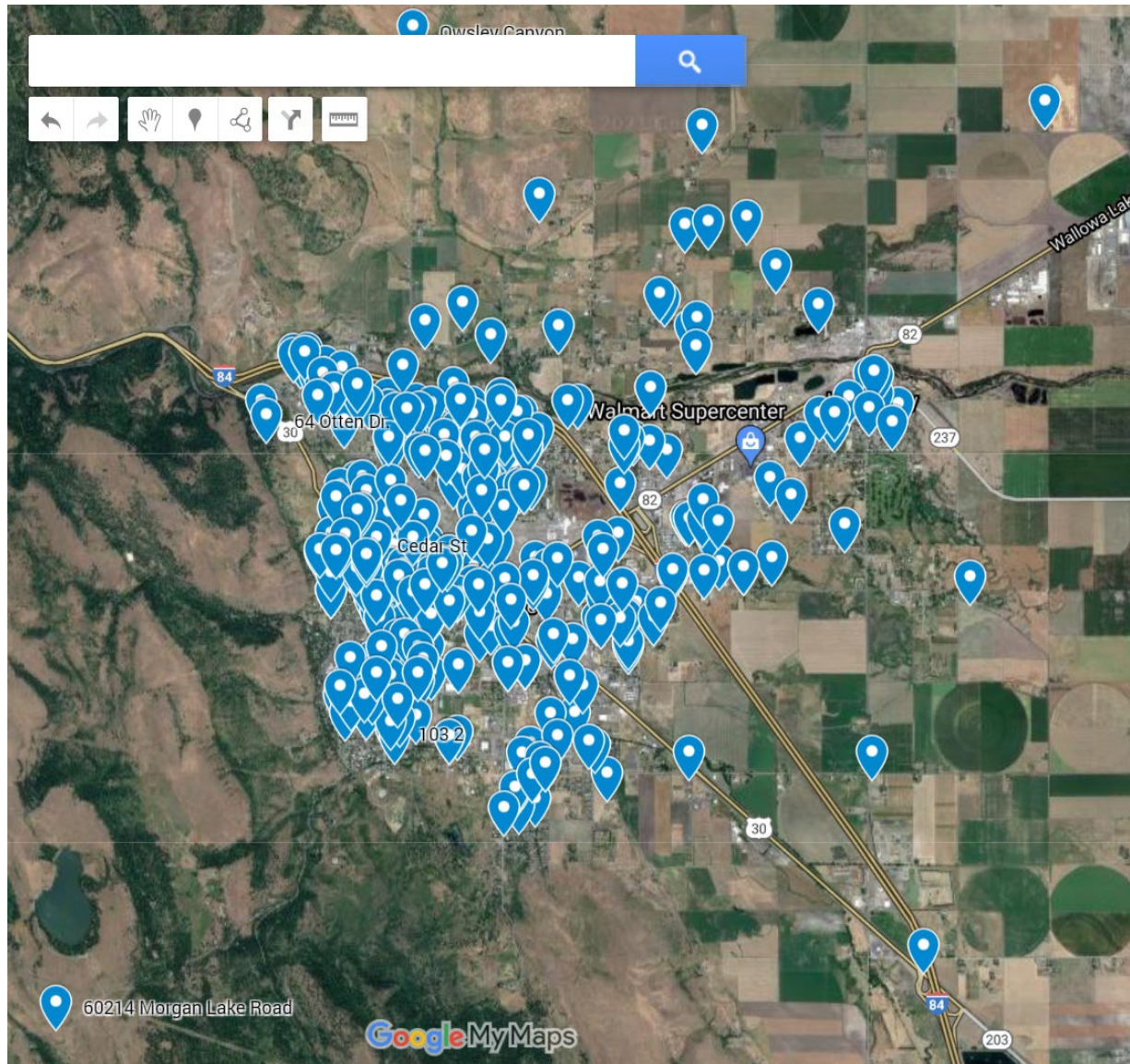
banners across busy street intersections and how about an event 'billboard'?

School

School resources

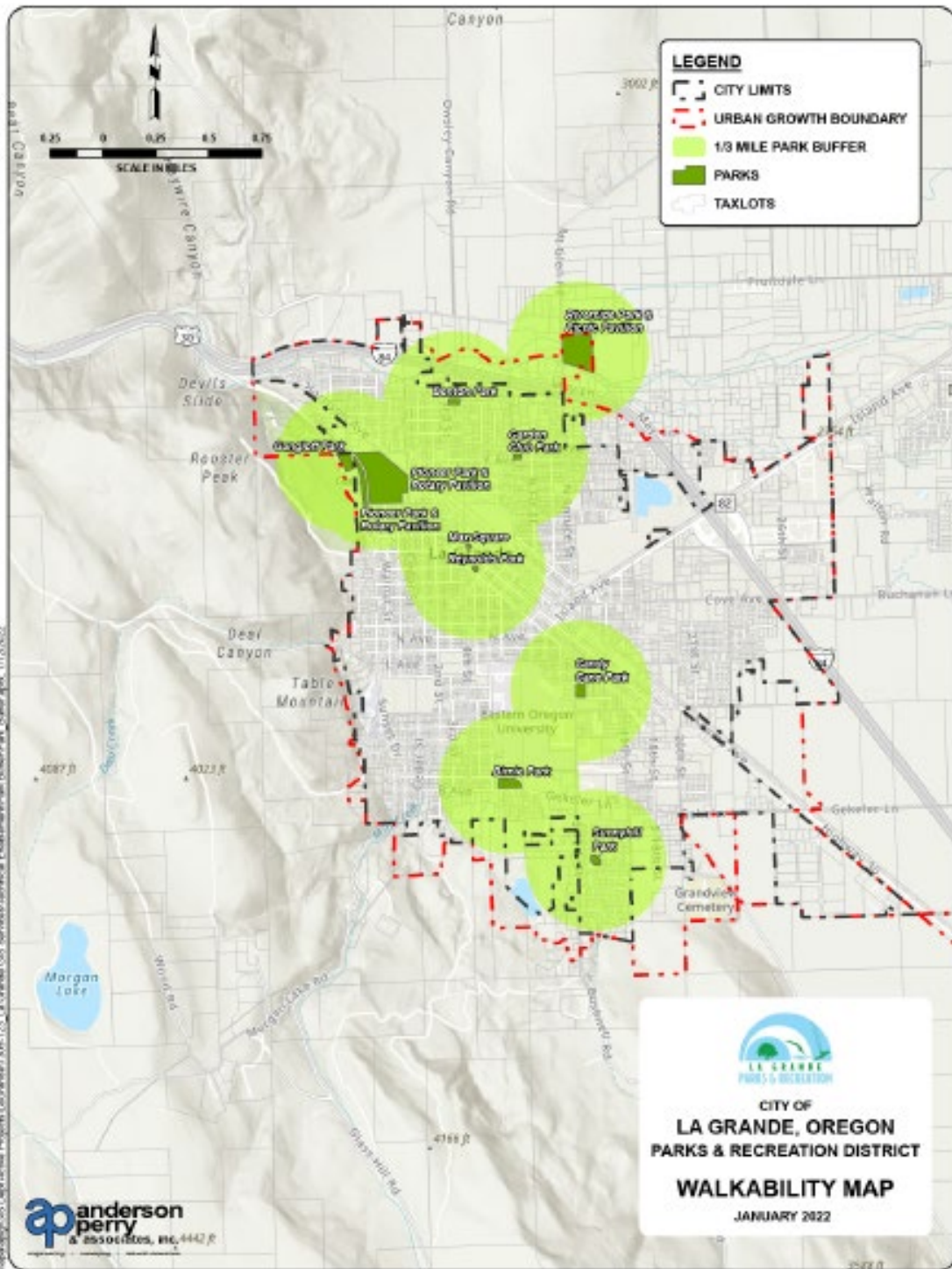
Sent home in school communication

Respondents Map (generated by Survey Monkey)





Walkability map – circles around parks represent 1/3 mile radius, the standard reasonable walking distance we are using for reference.



## **Appendix A**

### **Staff Recommendations for Improvements**

Some of these have been incorporated into the main plan, but some have not and are routine maintenance or programming items. Although not all are in the plan, staff still believe they are important to include here.

#### Max Square

- Add greenspace
- Install old Riverside fence to close stage area
- Move irrigation control out of Mamacitas
- Repair alley retaining wall
- Use space for more programs

#### Reynolds Park (Pocket Park)

- Maintain partnership with LG Mainstreet Downtown to maintain park
- Include on scavenger hunts or other local events to promote park location

#### Candy Cane Park

- Add covered picnic area (shade canopy or pavilion)
- Add permanent restroom

#### Sunnyhill Park

- Build loop trail behind playground
- Add covered picnic area (shade canopy or pavilion) NW corner
- New playground and surfacing

#### Birnie Park

- Add water/power to pavilion
- Add parking

#### Benton Park

- Add permanent restroom
- Add BBQ
- Add concrete pad for permanent picnic table location

#### Morgan Lake

- Install gate at road entry for winter closure
- Add at least 2 picnic tables and stand up barbecues to day use area near main dock
- Add vegetation to separate camp sites
- Install wildlife signage

#### Riverside Park

- Complete loop trail extension
- Repair damaged pavilion roof
- Replace playground with possible destination playground
- Add splash pad
- Re-surface parking area and access road

#### Pioneer Park

- Construct connector pathway to Gangloff Park

### Gangloff Park

- Add historical signage near cabin
- Repair pathways
- Construct connector pathway to Pioneer Park

### Community Forest

- Improve tree canopy cover where identified in tree inventory
- Improve diversity of community forest
- Build support for and encourage community engagement

### **Other thoughts from staff**

- Indoor recreation space is a priority
  - Indoor playground for small children/toddlers
  - Multi-purpose community space
  - Multi-purpose sports space (i.e. basketball, volleyball, baseball, soccer)
  - Dedicated teen space
  - Classrooms
- Park restrooms are a priority
  - Candy Cane Park
  - Benton Park
- Opportunity for Trails
  - Little Morgan
  - Gangloff to Pioneer
  - Loop trail at Sunnyhill
- Add more covered picnic areas may take strain off of pavilion rentals
  - Candy Cane Park
  - Sunnyhill
  - Benton