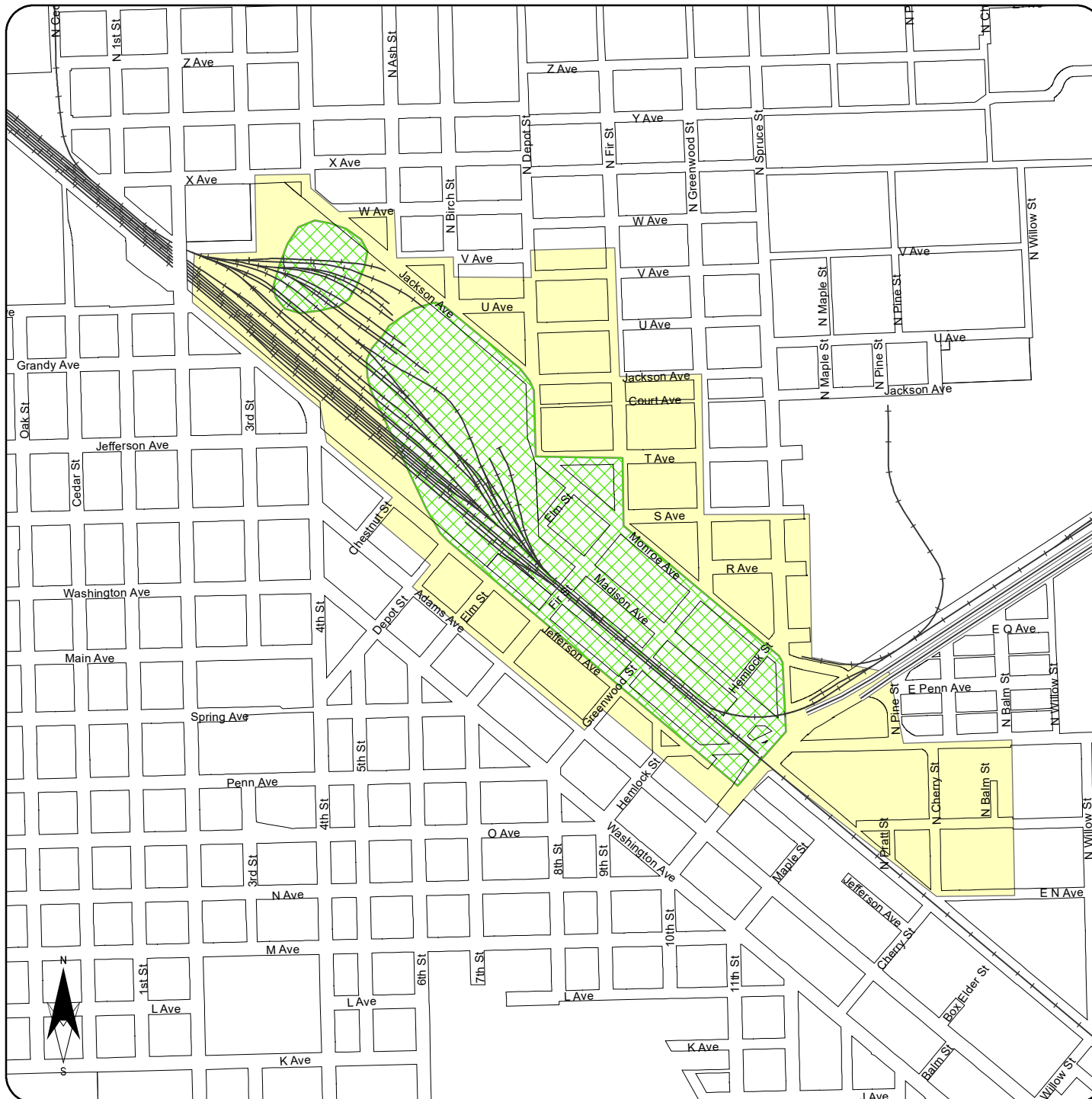



City of La Grande

Diesel Fuel Contamination Area



 Interim Locality of Facility

This boundary represents the maximum extent of potential migration of the diesel release based on existing data.

 Extent of Residual Diesel Product

This boundary represents the area where residual diesel product is likely to be encountered if a borehole or excavation encounters the water table.

NOTE

All boundaries are approximate based on limited data, and should only be used as a guideline. Properties on the periphery may be only partially impacted; however, entire blocks are highlighted.

0 500 1,000 1,500 Feet

Adopted by Ordinance Number 3210, Series 2013